

## **APPENDIX A - PROPOSED ORDINANCE**



**CITY OF SEATTLE**

**ORDINANCE \_\_\_\_\_**

**COUNCIL BILL \_\_\_\_\_**

..title

AN ORDINANCE relating to public assets, land use, and zoning; establishing regulations for the Center Campus Subarea within the sign overlay district for the Seattle Center; amending Section 23.55.054 of, and adding a new Section 23.55.062 to, the Seattle Municipal Code.

..body

WHEREAS, on July 22, 2019, the Seattle City Council adopted Ordinance 125869, establishing a sign overlay district, overlay district subareas, and sign regulations for the Seattle Center, including regulations for subareas containing the Seattle Center Arena, recently named Climate Pledge Arena, and the Bressi Garage block; and

WHEREAS, Ordinance 125869 created a sign overlay district that encompasses the entire Seattle Center campus, but regulations have not yet been adopted for the Center Campus Subarea created by that ordinance; and

WHEREAS, Seattle Center is a large civic cultural center that is home to a variety of cultural and entertainment venues and hosts numerous events year-round; and

WHEREAS, such events, attractions, and amenities draw over 12 million visitors a year to the Seattle Center campus; and

WHEREAS, the Director of the Seattle Center Department is authorized to adopt, promulgate, amend and rescind rules and regulations as are consistent with and necessary to carry out the duties of the Director of the Seattle Center Department, which duties include advertising events, publicizing, and otherwise promoting the use of Seattle Center facilities; and

WHEREAS, while in keeping with both the World's Fair's spirit of progress, and the Seattle Center campus's past sign practices, an upgraded signage program that addresses both

1 sustainability and operational issues and is consistent in design and function will align the  
2 Seattle Center campus with the arena site and benefit Seattle Center, its resident  
3 organizations, and the visiting public; and

4 WHEREAS, Seattle Center’s design and operations are intended to integrate with and enhance  
5 connections to Uptown and adjoining neighborhoods and align with the Urban Design  
6 Framework, and the community surrounding Seattle Center has asked for these goals to  
7 be supported with better signage and wayfinding; and

8 WHEREAS, one purpose of the sign district overlay is to regulate signage to promote the health  
9 and safety of the general public and the Seattle Center as a vibrant and valuable  
10 community resource for arts, entertainment, sports, and civic events; and

11 WHEREAS, The City of Seattle (City)’s current sign code provisions do not address the signage  
12 needs of a modernized Seattle Center and its cultural and entertainment venues and  
13 events; and

14 WHEREAS, the City desires to now establish the sign regulations for the Center Campus  
15 Subarea of the Seattle Center Sign Overlay District and to amend the boundary of the  
16 Center Campus Subarea to include the City-owned and City-managed area north of the  
17 Climate Pledge Arena occupied by the Fountain Pavilion, KEXP, VERA, and SIFF,  
18 referred to as the Northwest Rooms; and the adjacent Northwest and Alki Courtyards,  
19 the Seattle Center Monorail system, City-owned green space fronting Mercer Street, and  
20 the Seattle Center Skate Plaza; NOW, THEREFORE,

21 **BE IT ORDAINED BY THE CITY OF SEATTLE AS FOLLOWS:**

22 Section 1. Map A for Section 23.55.054 of the Seattle Municipal Code, which section  
23 was enacted by Ordinance 125869, is amended as follows:

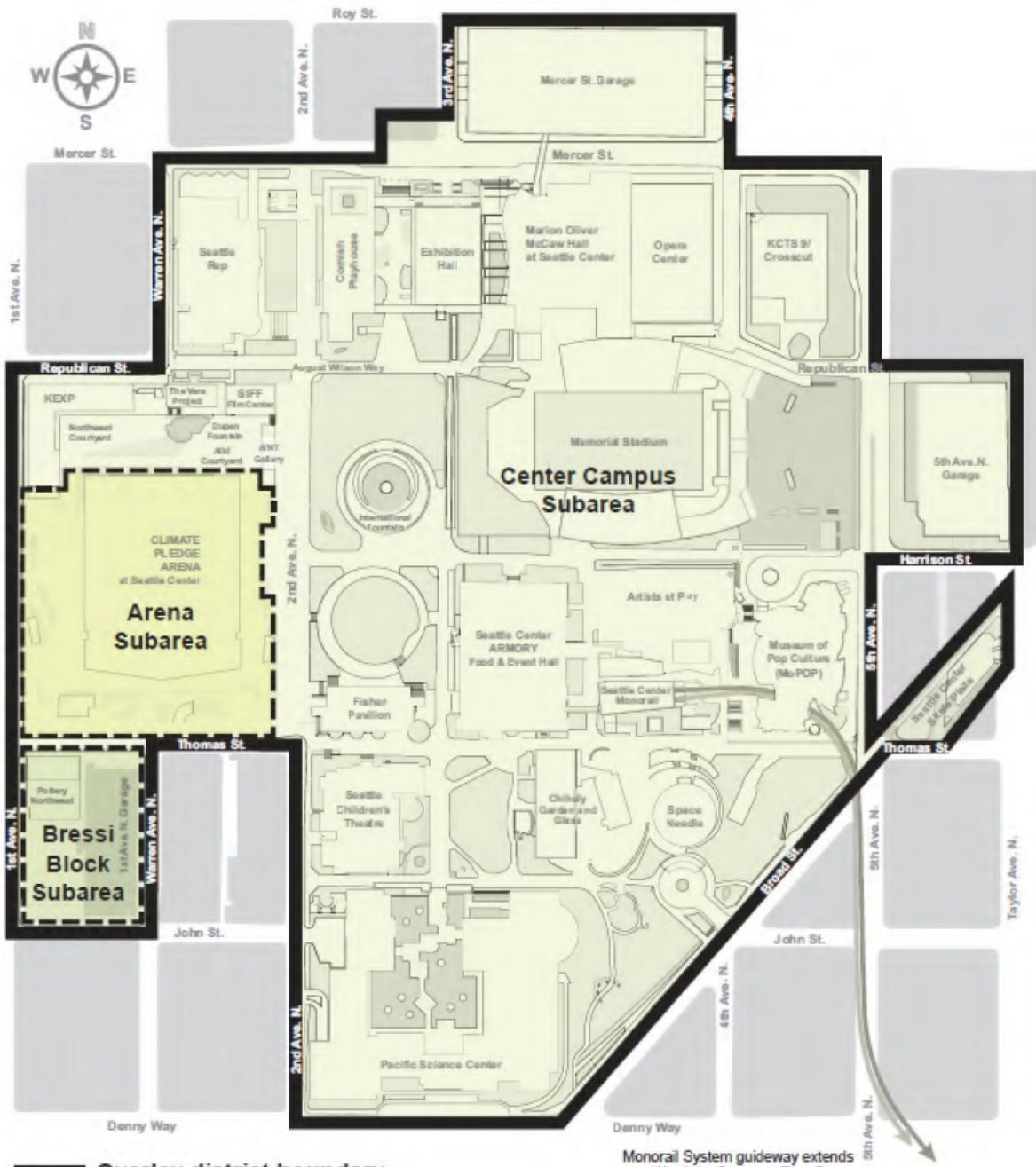
1



2

3

Map A for 23.55.054  
 Seattle Center Sign Overlay District



**—** Overlay district boundary  
**- - -** Overlay subarea boundary

*Note:* Overlay boundary lines include sidewalk/planting strips, exclude roadway.

1  
 2

1 Section 2. A new Section 23.55.062 is added to the Seattle Municipal Code as follows:

2 **23.55.062 Center Campus Subarea—Overlay District sign standards**

3 A. Except for technical code approval required by the Seattle Building Code, Seattle  
4 Electrical Code, or other applicable technical code, and except for landmark regulation under  
5 Chapter 25.12, the Seattle Center Director is authorized to install, operate, maintain, administer,  
6 manage, and control campus signs so long as the Seattle Center Director determines such signs  
7 are consistent with this Chapter 23.55, the Seattle Center Sign Guidelines as updated and  
8 approved by the Seattle Center Advisory Commission, and any applicable rules and regulations  
9 adopted pursuant to Section 17.04.040. The Seattle Center Director may directly perform the  
10 installation, operation, or maintenance of campus signs, or delegate such performance.

11 B. For purposes of this Part 4 of Chapter 23.55, the following definitions apply:

12 “Campus signs” means signs owned or managed by the Seattle Center  
13 Department on City-owned or City-managed property within the Center Campus Subarea, as  
14 well as temporary event signs located within the Subarea.

15 “Scrolling” has the same meaning as the term is defined in subsection  
16 23.55.058.H.8.

17 “Seattle Center Director” means the Director of the Seattle Center Department.

18 C. Except for technical code approval and landmark regulation under Chapter 25.12 as  
19 provided in subsection 23.55.062.A, campus signs within the Center Campus Subarea are  
20 regulated only by the standards of this Section 23.55.062.

21 D. On-premises and sponsorship signs are permitted on City-owned or City-managed  
22 property within the Center Campus Subarea. For purposes of this Part 4 of Chapter 23.55, all  
23 property located within the Seattle Center Sign Overlay District comprises the premises. Off-

1 premises signs within the Center Campus Subarea owned or managed by the City on City-owned  
2 or City-managed property are prohibited.

3 E. The number, type, maximum area, maximum height, illumination, display methods,  
4 and standards of campus signs within the Center Campus Subarea shall be determined by the  
5 Seattle Center Director, in accordance with the following standards, any applicable Seattle  
6 Center Guidelines as updated and approved by the Seattle Center Advisory Commission, and any  
7 applicable rules and regulations adopted pursuant to Section 17.04.040:

8 1. Illumination and light and glare

9 a. The light source for externally illuminated signs shall be shielded and  
10 directed away from adjacent properties.

11 b. Signs may be electric, externally illuminated, or non-illuminated, or  
12 may use any combination of these features. Signs may use illuminated video display methods if  
13 the sign meets the development standards in this subsection 23.55.062.E.1 and subsection  
14 23.55.062.E.4.

15 c. Between dusk and dawn, video displays shall be limited in brightness to  
16 no more than 500 nits (candela per square meter), measured as described in subsection  
17 23.55.005.A.10.

18 2. The standards for temporary signage in subsection 23.55.058.F.1 through F.5  
19 shall apply to the Center Campus Subarea. For purposes of this Section 23.55.062, temporary  
20 screens used primarily to show movies, live stream events, or other similar event purposes are  
21 not signs. Temporary signage within the Center Campus Subarea may also include video display.

22 3. Non-rigid event-related banners of up to 180 square feet per banner may be  
23 hung or temporarily affixed on the Seattle Center skybridge over Mercer Street and the Director



1 of the Seattle Department of Transportation authorizes the Seattle Center Director to permit such  
2 banners as authorized in subsection 15.04.015.E.

3 4. Video displays

4 a. The total duration of multiple video display messages together may not  
5 constitute more than 20 seconds of every two minutes.

6 b. Video displays are prohibited between 10 p.m. and 7 a.m. except that  
7 video displays are permitted within an hour after an event in the Seattle Center Sign Overlay  
8 District ends.

9 c. A video display message shall have a minimum duration of two seconds  
10 and a maximum duration of ten seconds. Calculation of the duration does not include the number  
11 of frames per second used in a video display.

12 d. There shall be ten seconds of still image or blank display following  
13 every message using a video display method.

14 e. All video displays, except those described in subsection 23.55.062.E.4.f,  
15 and except those regulated by subsection 23.55.062.E.5, shall be set back a minimum of 20 feet  
16 from the street curb of the nearest unvacated right-of-way.

17 f. A video display using only scrolling alphanumeric characters is  
18 permitted and may be located adjacent to a right-of-way with no minimum setback, provided that  
19 such a sign may not exceed 42 feet in length and 18 inches in height. No more than 21 feet of  
20 any such sign face may be directed at the same right-of-way. Any such sign must be at least 8  
21 feet above grade. A video display consistent with this subsection 23.55.062.E.4.f is not subject to  
22 the standards in subsections 23.55.062.E.4.a through 23.55.062.E.4.d.

1                   5. Signs that are within 20 feet from the street curb of the nearest unvacated  
2 roadway and oriented so as to be visible from such unvacated roadway, and signs within the  
3 Center Campus Subarea that are not campus signs, shall be regulated by the general sign  
4 standards in Part 1 of Chapter 23.55, subsection 23.55.062.D, and subsection 23.55.062.E.4.f.

5                   6. Campus signs may also include the following:

6                   a. Portable signs including readily detachable signs having a fixed base or  
7 mounting for the placement and intermittent use of such signs;

8                   b. Banners, streamers, strings of pennants, fabric signs, festoons of lights,  
9 clusters of flags, wind animated objects, balloons, searchlights, and similar devices;

10                  c. Signs attached to or located on event related or sponsored stationary  
11 motor vehicles, equipment, trailers, and similar devices;

12                  d. Changing-image and changing-color signs, including video display;

13                  e. Memorial signs or tablets, or signs stating the name of a building or date  
14 of construction;

15                  f. Signs warning of danger or providing safety information; and

16                  g. National, state, and other flags.

17                  7. Signs projecting over a public right-of-way must comply with Section  
18 23.55.004.

19                  8. Signs within 20 feet from public right-of-way intersections or  
20 driveways must comply with Section 23.55.008.

21                  9. Sign kiosks are permitted on City-owned or City-managed property  
22 within the Center Campus Subarea.

- 1                    10. Permanent signs that are flashing or that rotate or have a rotating or moving
- 2 part or parts that revolve at a speed in excess of seven revolutions per minute are prohibited
- 3 within the Center Campus Subarea.

1 Section 3. This ordinance shall take effect and be in force 30 days after its approval by  
2 the Mayor, but if not approved and returned by the Mayor within ten days after presentation, it  
3 shall take effect as provided by Seattle Municipal Code Section 1.04.020.

4 Passed by the City Council the \_\_\_\_\_ day of \_\_\_\_\_, 2021,  
5 and signed by me in open session in authentication of its passage this \_\_\_\_\_ day of  
6 \_\_\_\_\_, 2021.

7 \_\_\_\_\_  
8 President \_\_\_\_\_ of the City Council

9 Approved / returned unsigned / vetoed this \_\_\_\_\_ day of \_\_\_\_\_, 2021.

10 \_\_\_\_\_  
11 Jenny A. Durkan, Mayor

12 Filed by me this \_\_\_\_\_ day of \_\_\_\_\_, 2021.

13 \_\_\_\_\_  
14 Monica Martinez Simmons, City Clerk

15 (Seal)

## **APPENDIX B - PROPOSED SIGNS**



# SC Campus Exterior Signage



**CLIMATE  
PLEDGE  
ARENA**



seattlecenter









**Campus Exterior Signage  
Design Development**

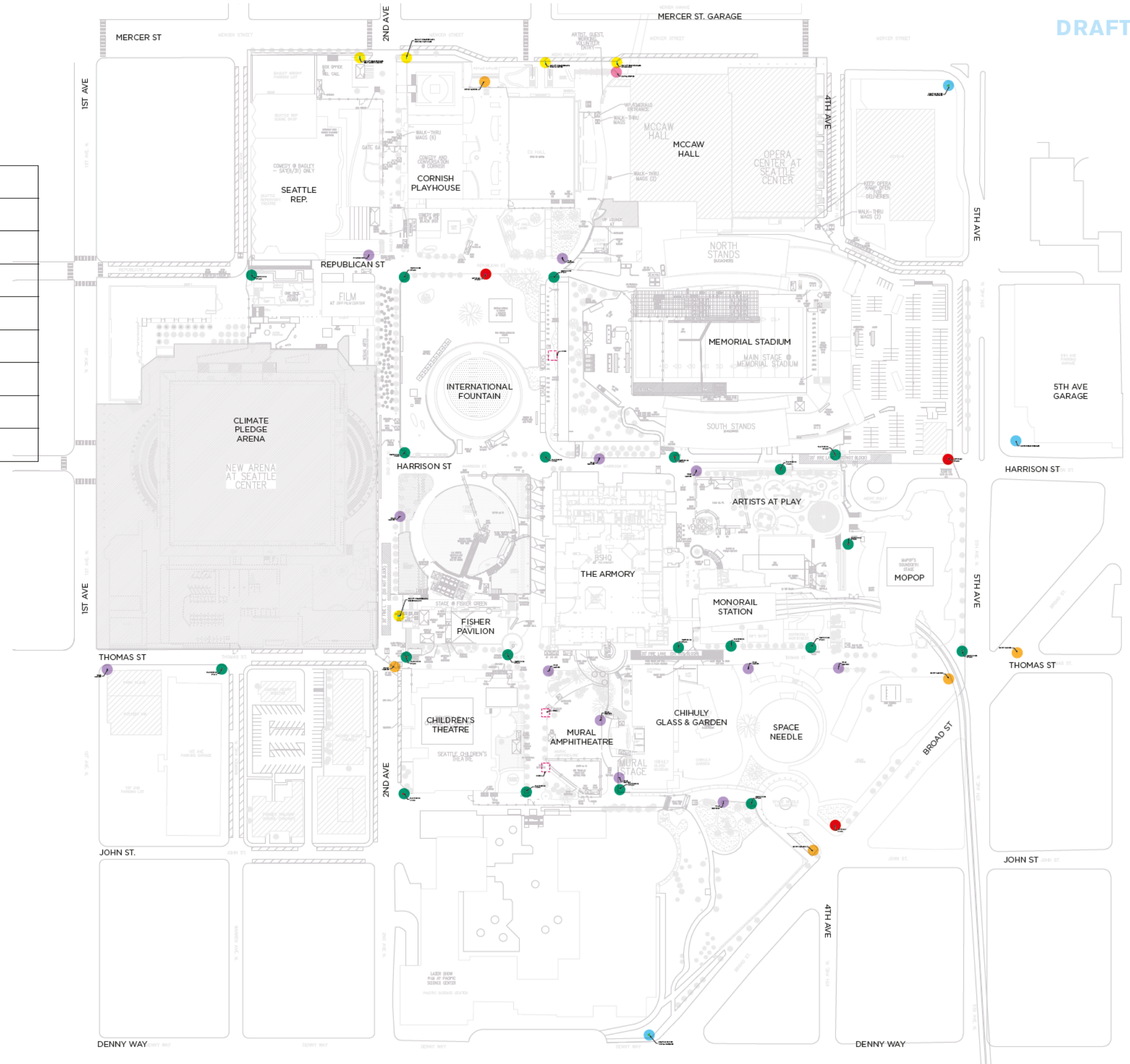
February 19, 2021

**POPULOUS**

# CAMPUS SIGNAGE SIGN LOCATION PLAN

DRAFT

	SIGN TYPE	DISPLAY TYPE	QTY STUDIED	
	WAYFINDING PYLON	DIGITAL CHANGING IMAGE	20	
	ENTRY MARKER	STATIC	5	
	CAMPUS READERBOARD	DIGITAL CHANGING IMAGE	3	
	POLE BANNER	DIGITAL CHANGING IMAGE	12	
	FACILITY READERBOARD	DIGITAL CHANGING IMAGE	5	
	ART WALK DISPLAY	DIGITAL CHANGING IMAGE	3	
	INFORMATION KIOSK	DIGITAL CHANGING IMAGE	3	
	DIGITAL POSTER	DIGITAL CHANGING IMAGE	1	



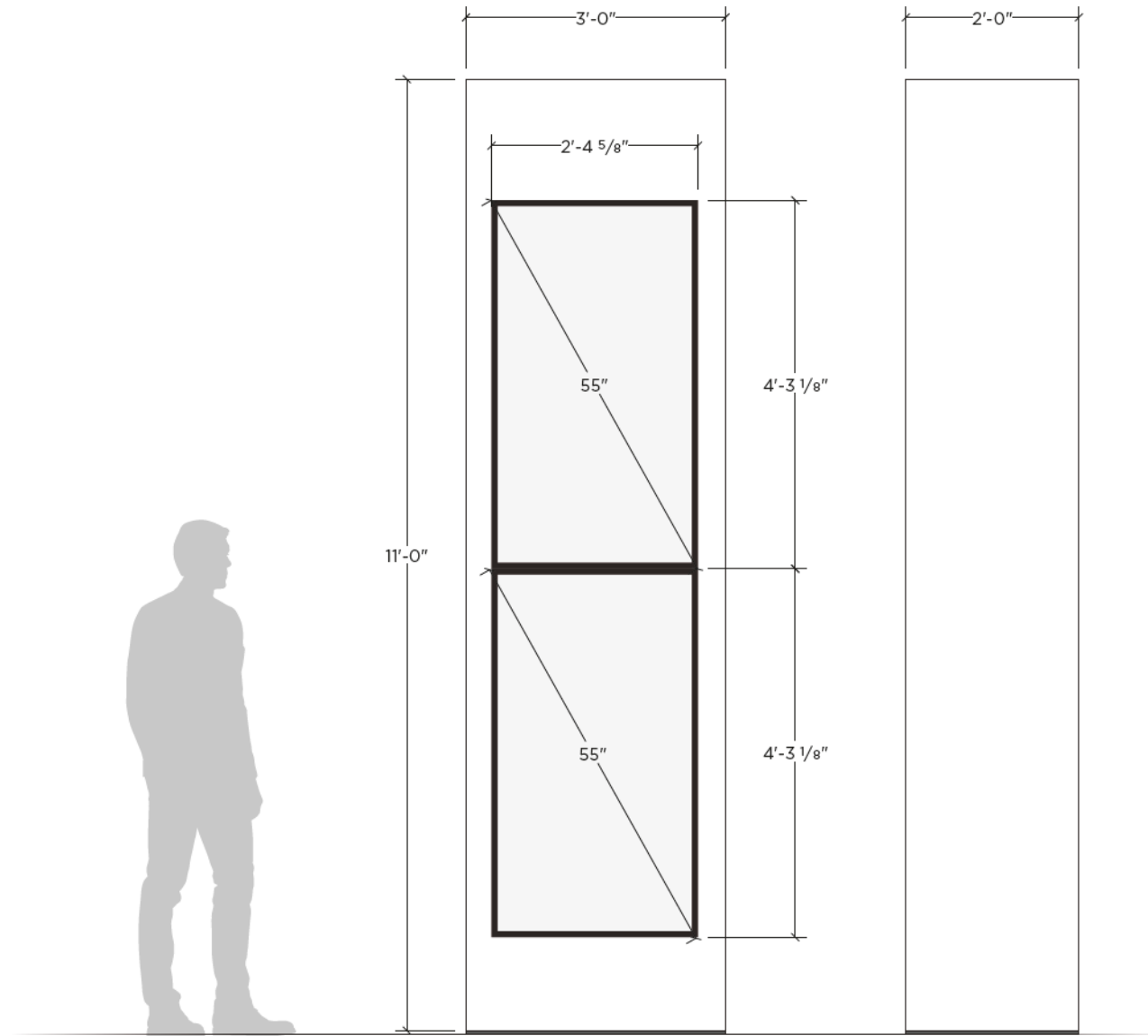


# CAMPUS SIGNAGE WAYFINDING PYLON

DRAFT

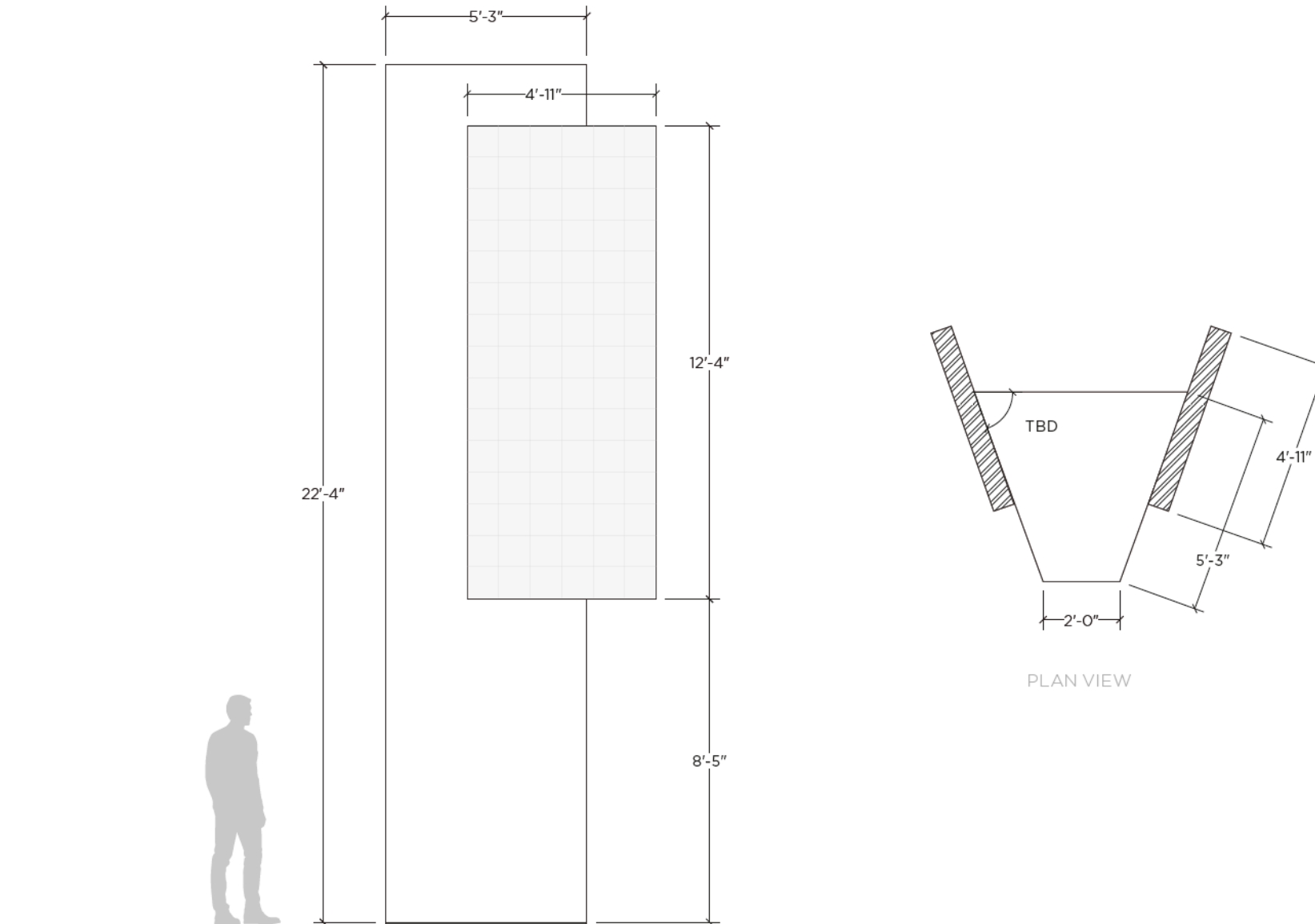
Tube framed welded aluminum cabinet with perforated side panels for ventilation. Two (2) 55" Samsung Outdoor LCD screens stacked per face. An internally illuminated logo will be displayed at the top of the sign face (2). Sign is double sided; four (4) total LCD displays per sign.

EXISTING DIMENSIONS: 11'-0" H x 3'-0" W x 0'-8 1/4" D



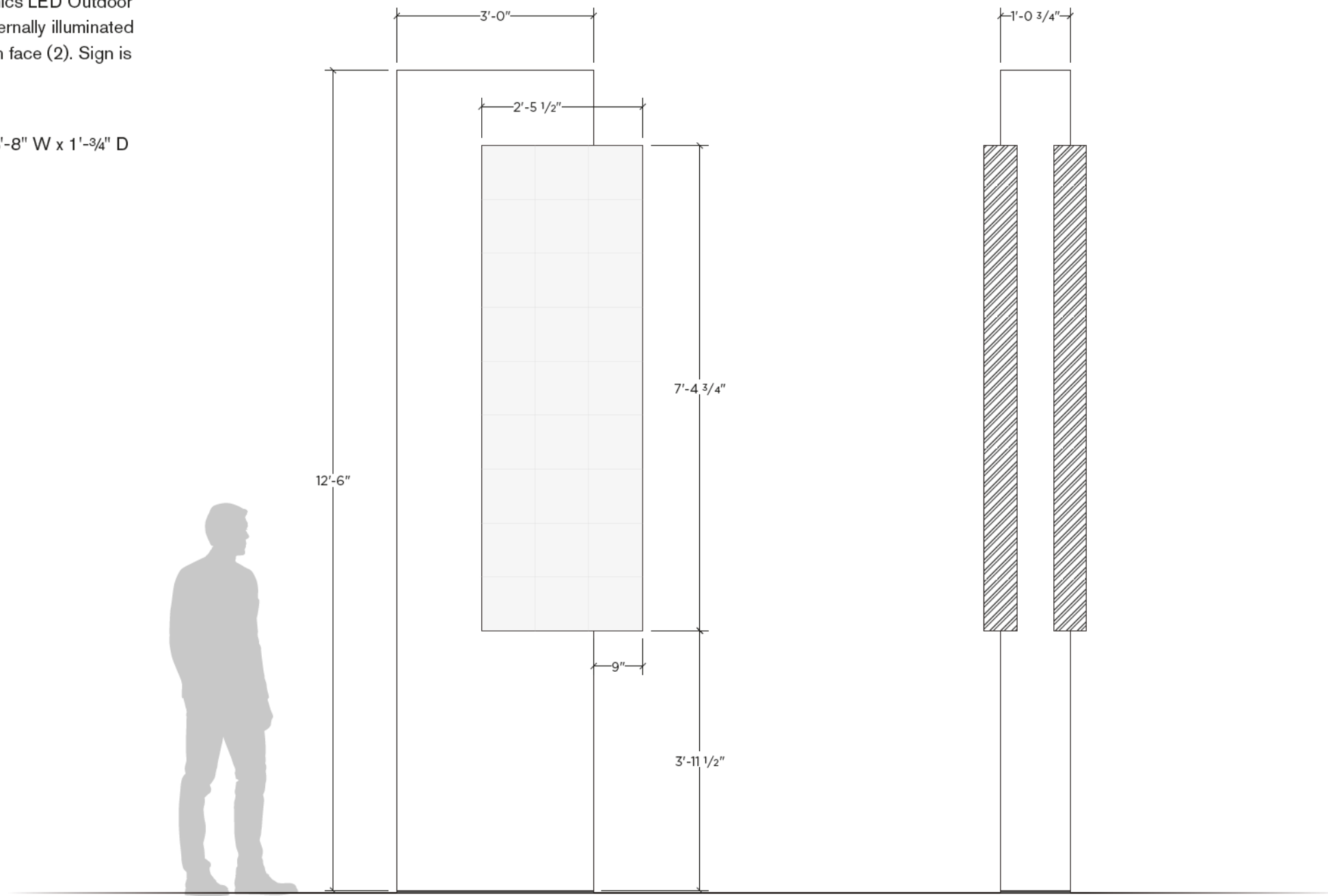
Tube framed welded aluminum cabinet with perforated side panels for ventilation. Screens (2) to be Daktronics LED Outdoor Display. An internally illuminated logo will be displayed on the sign face (2).

EXISTING DIMENSIONS: 20'-4" H x 12'-8 5/8"W

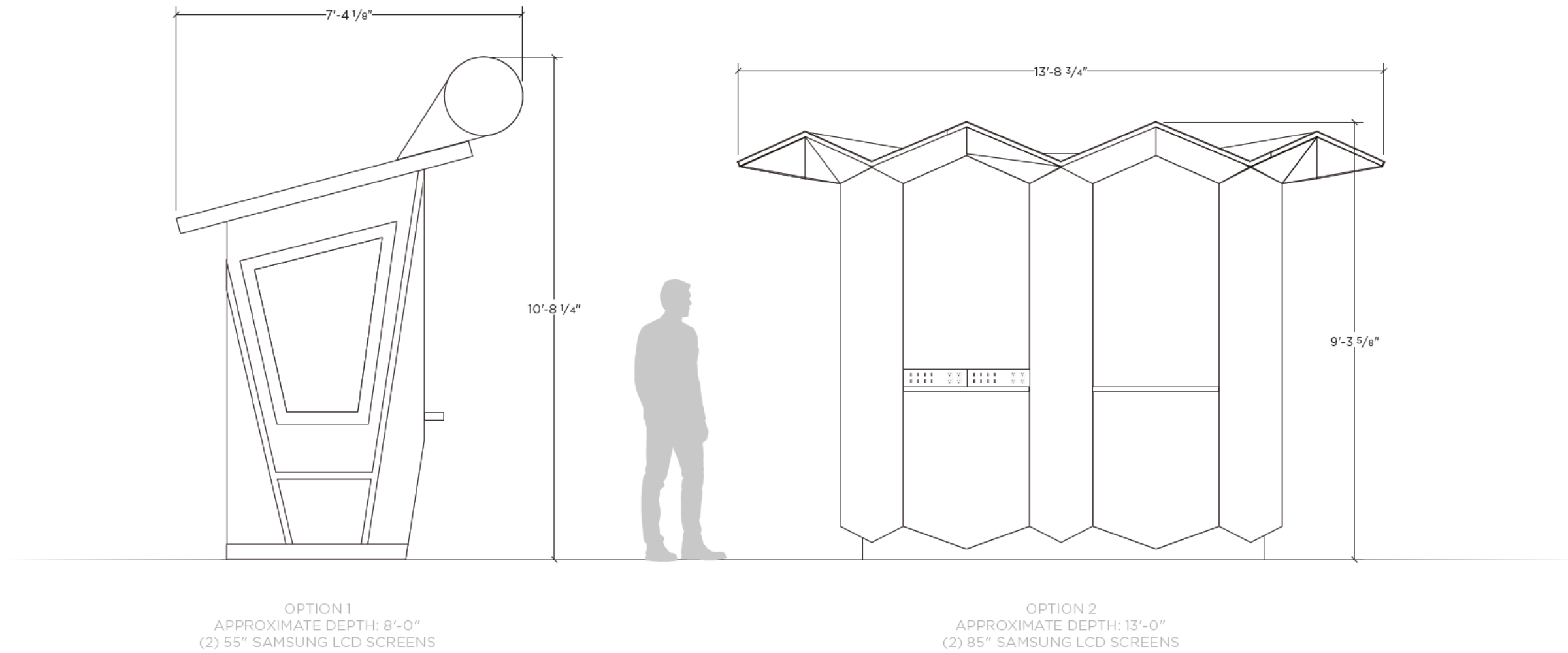


Tube framed welded aluminum cabinet with perforated side panels for ventilation. Screens (2) to be Daktronics LED Outdoor Display. An internally illuminated logo and an internally illuminated facility name will be displayed on the sign face (2). Sign is double-sided.

EXISTING DIMENSIONS: 15'-1 7/16" H x 3'-8" W x 1'-3/4" D



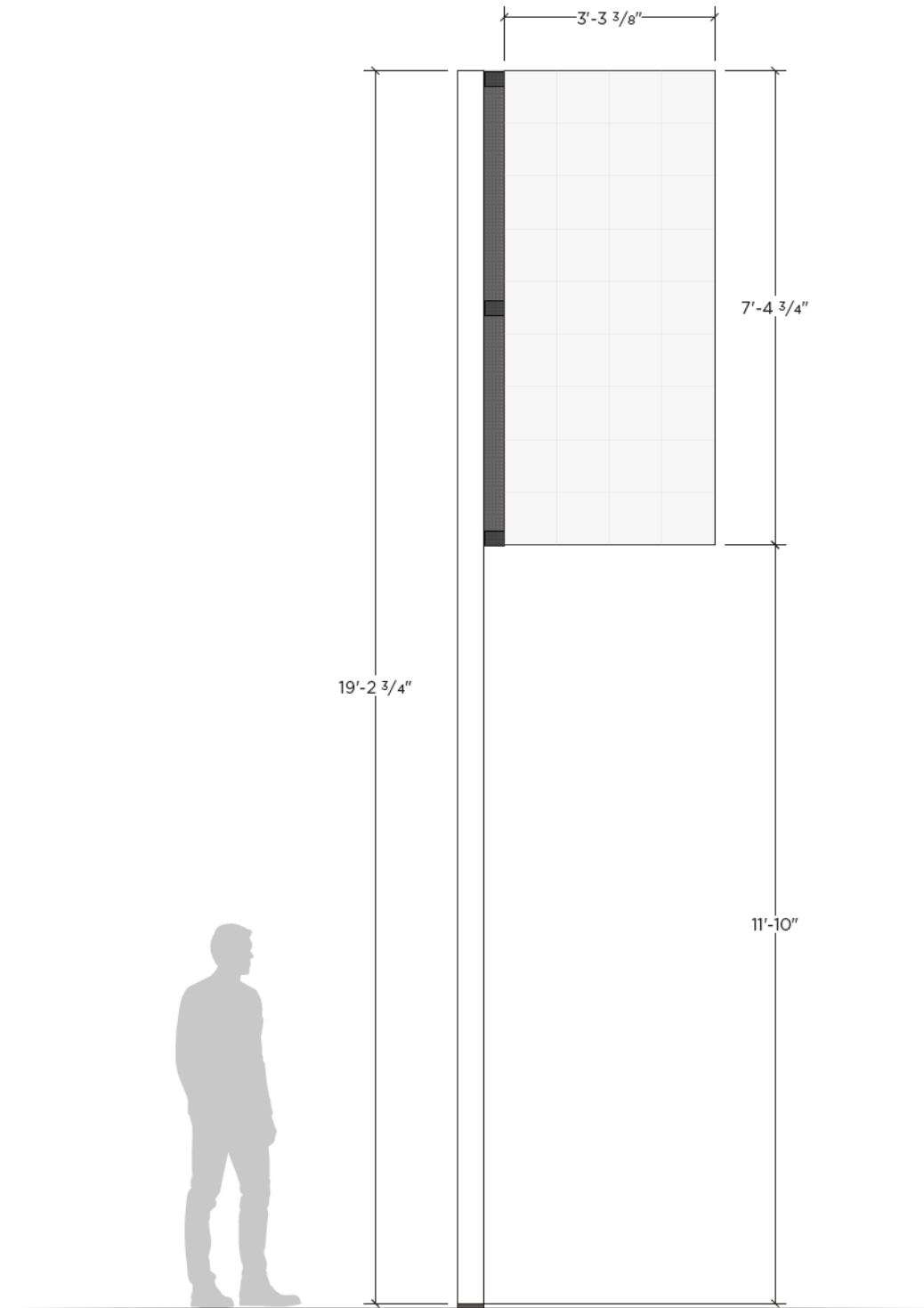
Each option features an architectural kiosk structure with branded signage and digital displays. Each kiosk to feature two (2) digital displays at either 55" or 85" Samsung Outdoor LCD screens. Each kiosk is double-sided. Each kiosk features solar panels on the roof.



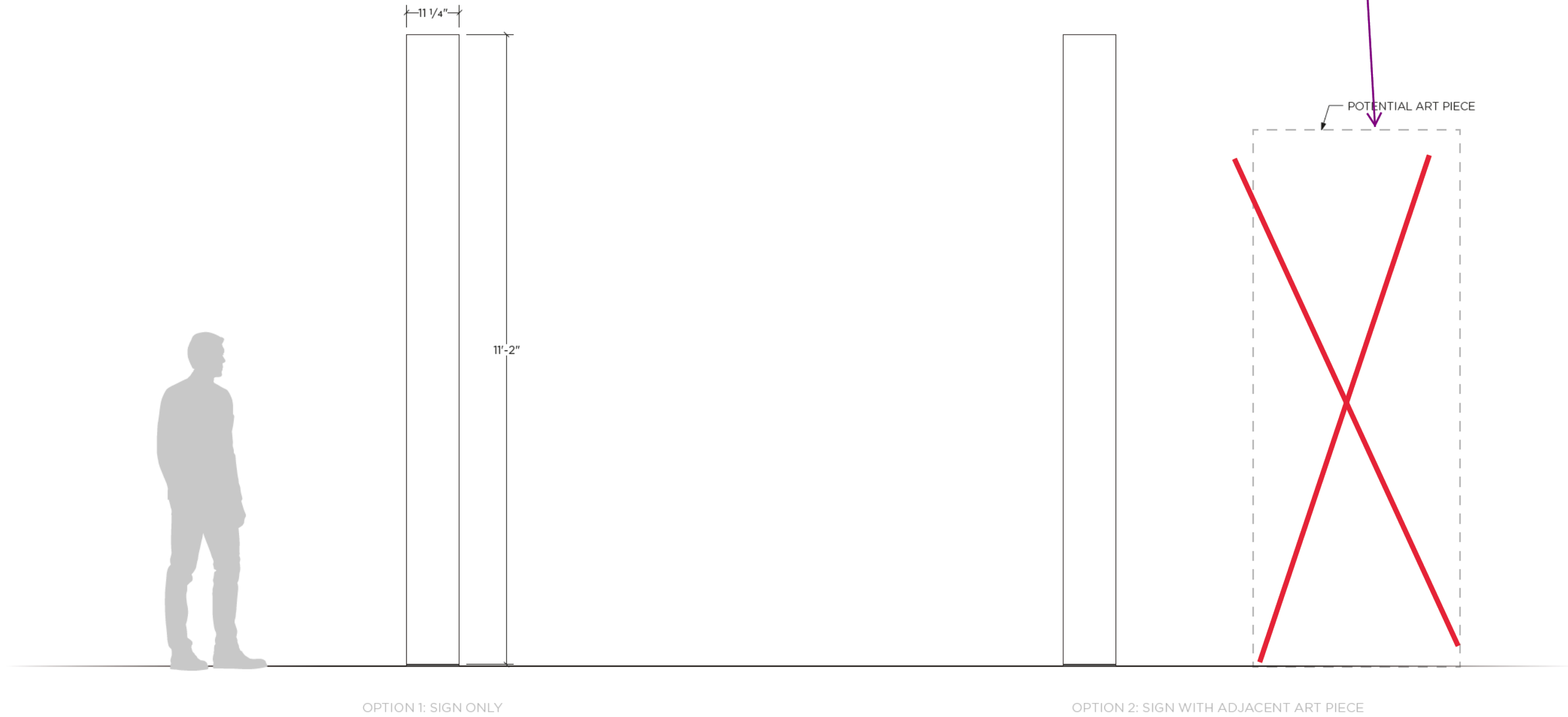
# CAMPUS SIGNAGE **POLE BANNER**

DRAFT

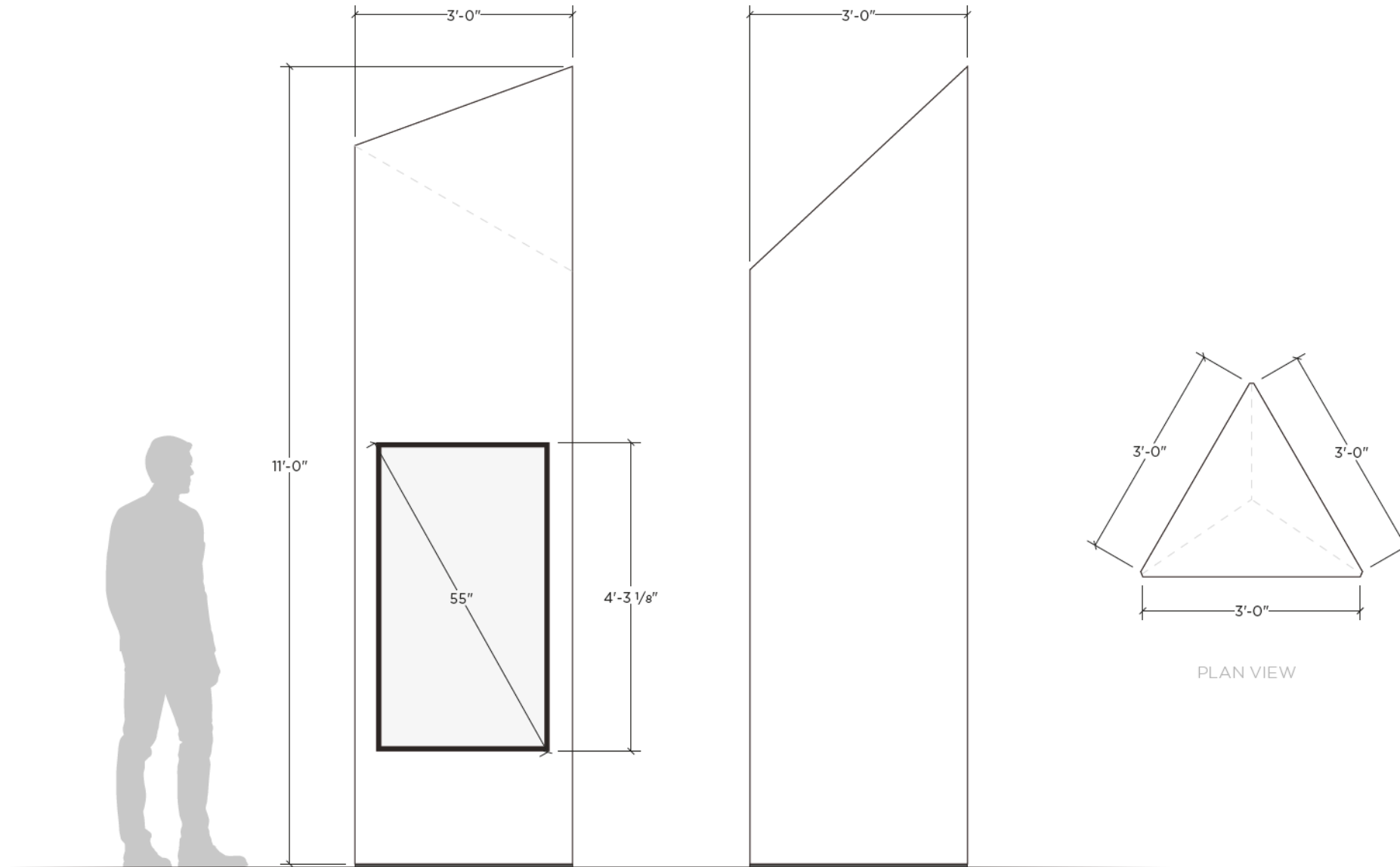
Tube framed welded aluminum cabinet with perforated side panels for ventilation. Screen to be Daktronics LED Outdoor Display. Post to be painted, square metal tube. Sign is double-sided; two (2) Daktronics screen per sign.



Tube framed welded aluminum cabinet. An internally illuminated logo will be displayed at the top of the sign face (2). Sign is a four-sided pylon.



Tube framed welded, internally illuminated aluminum cabinet with perforation at bottom of panels for ventilation. One (1) 55" Samsung Outdoor LCD screen. An internally illuminated logo will be displayed at the top of the sign face.



# CAMPUS SIGNAGE **DIGITAL THEATER POSTER**

DRAFT

Screen (1) to be Daktronics LED Outdoor Display.

EXISTING DIMENSIONS: 50" H x 24" W /ea.  
(THREE (3) PRINTED POSTERS)

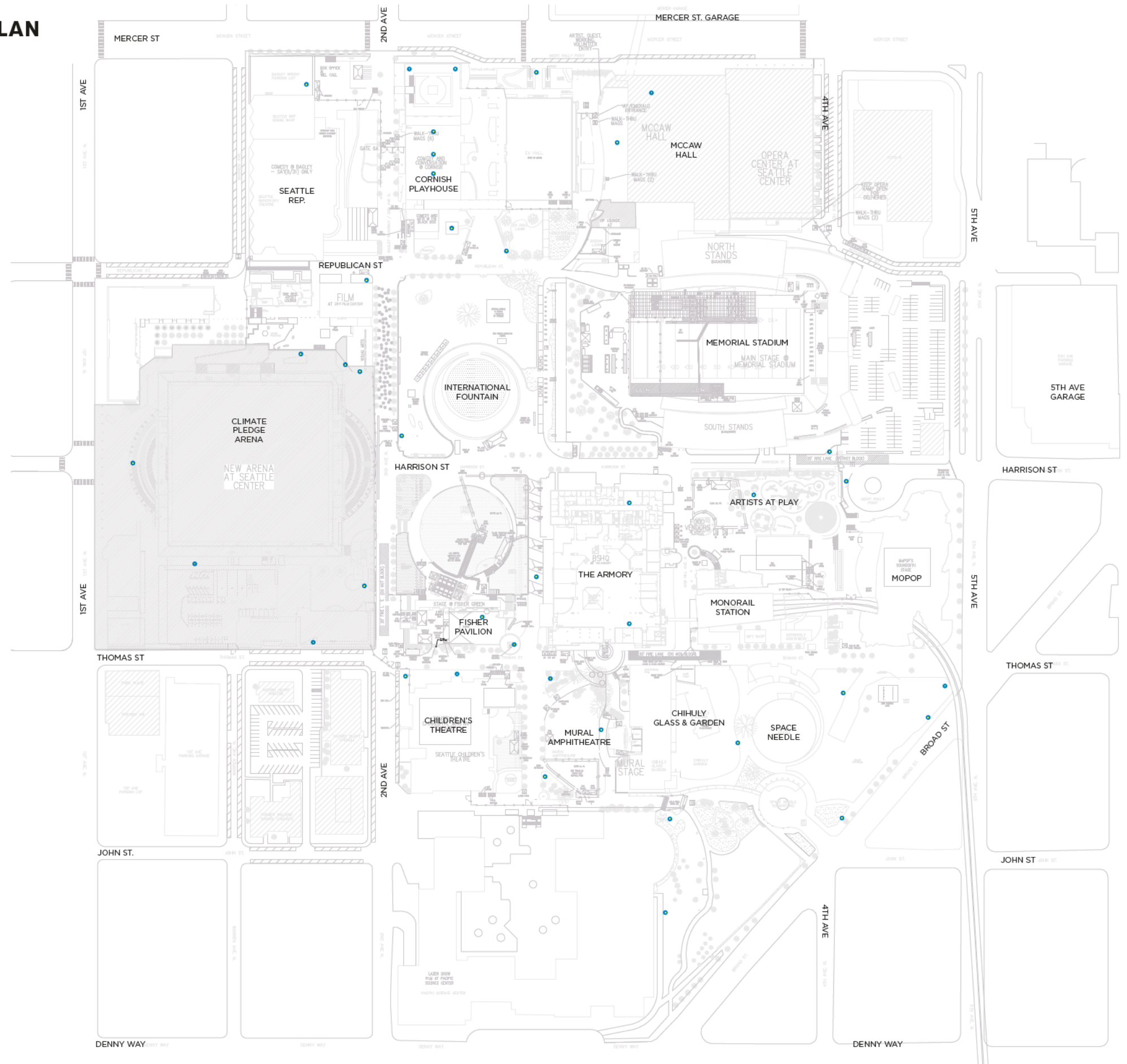




# CAMPUS SIGNAGE ART WALK ARTWORK LOCATION PLAN

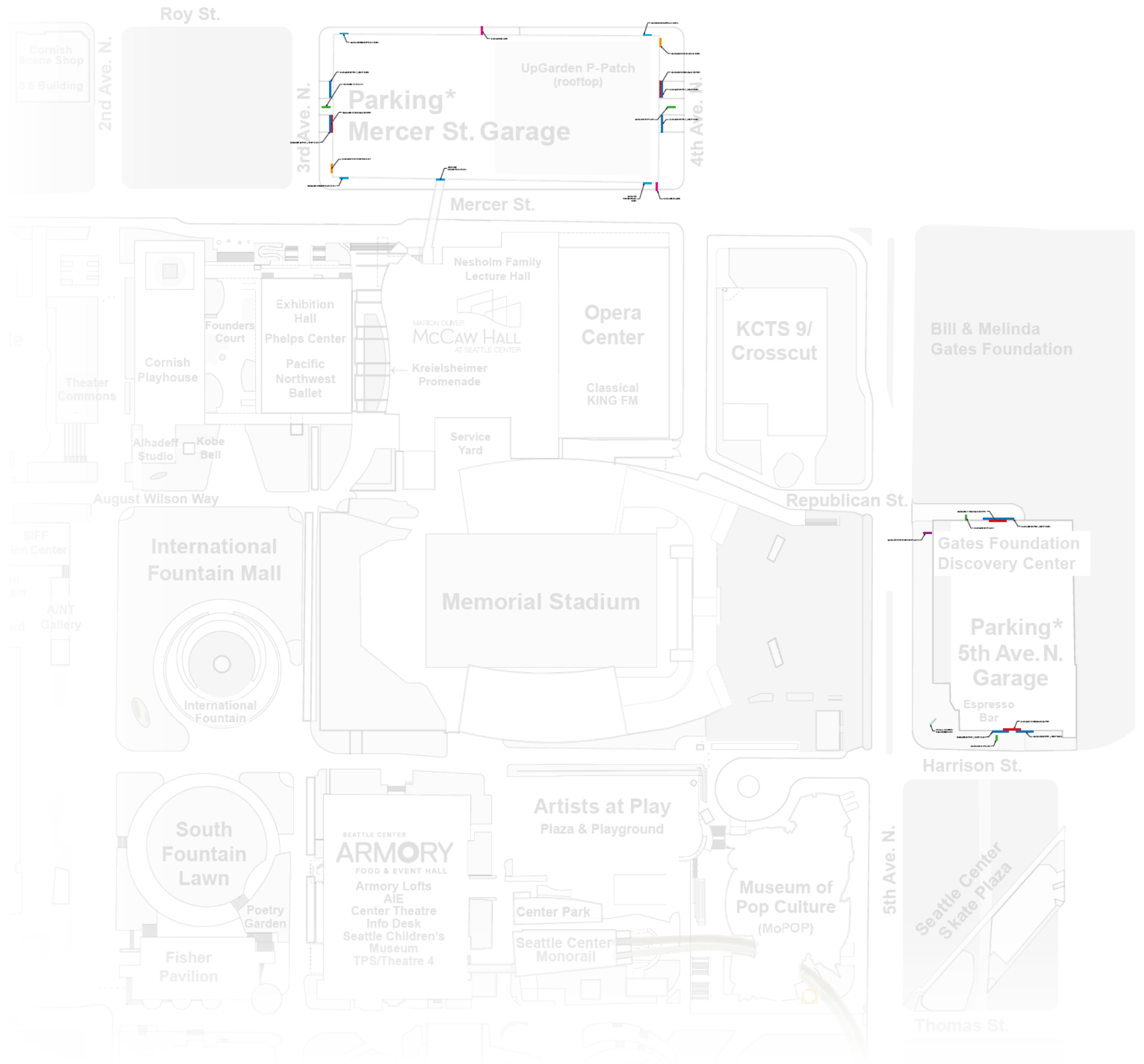
## SIGN TYPES AND QUANTITIES:

- Art Walk Artwork ID Signs (50)



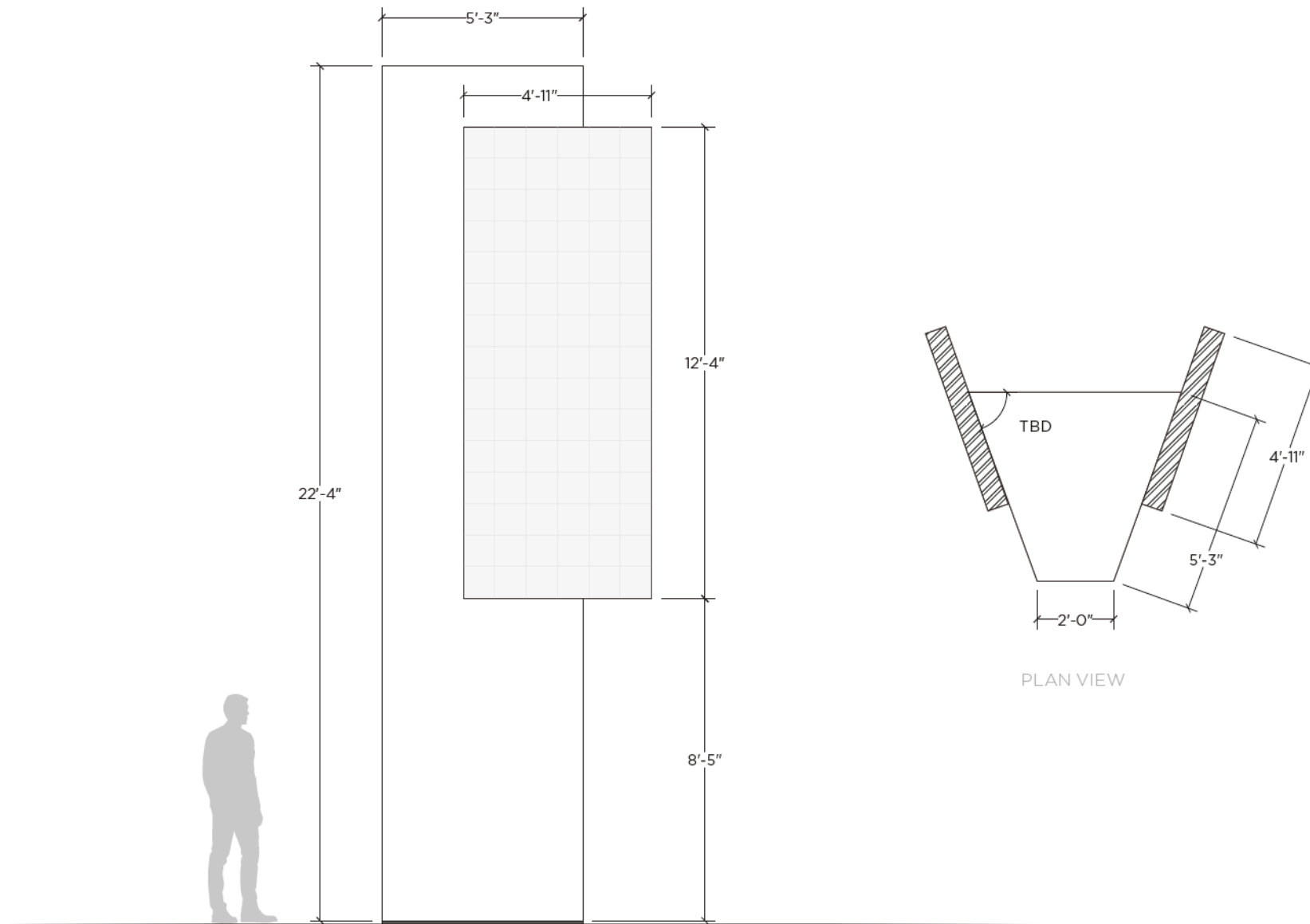
**SIGN TYPES AND QUANTITIES:**

- CAMPUS READERBOARD -  
(Qty shown on Page 2)
- GARAGE ID PYLON 4
- GARAGE WAYFINDING SIGN 2
- GARAGE WAYFINDING PYLON 1
- GARAGE OVERHEAD ENTRY 4
- GARAGE BLADE 2
- GARAGE PEDESTRIAN SIGN 5
- GARAGE ENTRY / EXIT SIGN 7



Tube framed welded aluminum cabinet with perforated side panels for ventilation. Screens (2) to be Daktronics LED Outdoor Display. An internally illuminated logo will be displayed on the sign face (2).

EXISTING DIMENSIONS: 20'-0" H x 7'-9 7/16" W x 1'-3 5/8" D

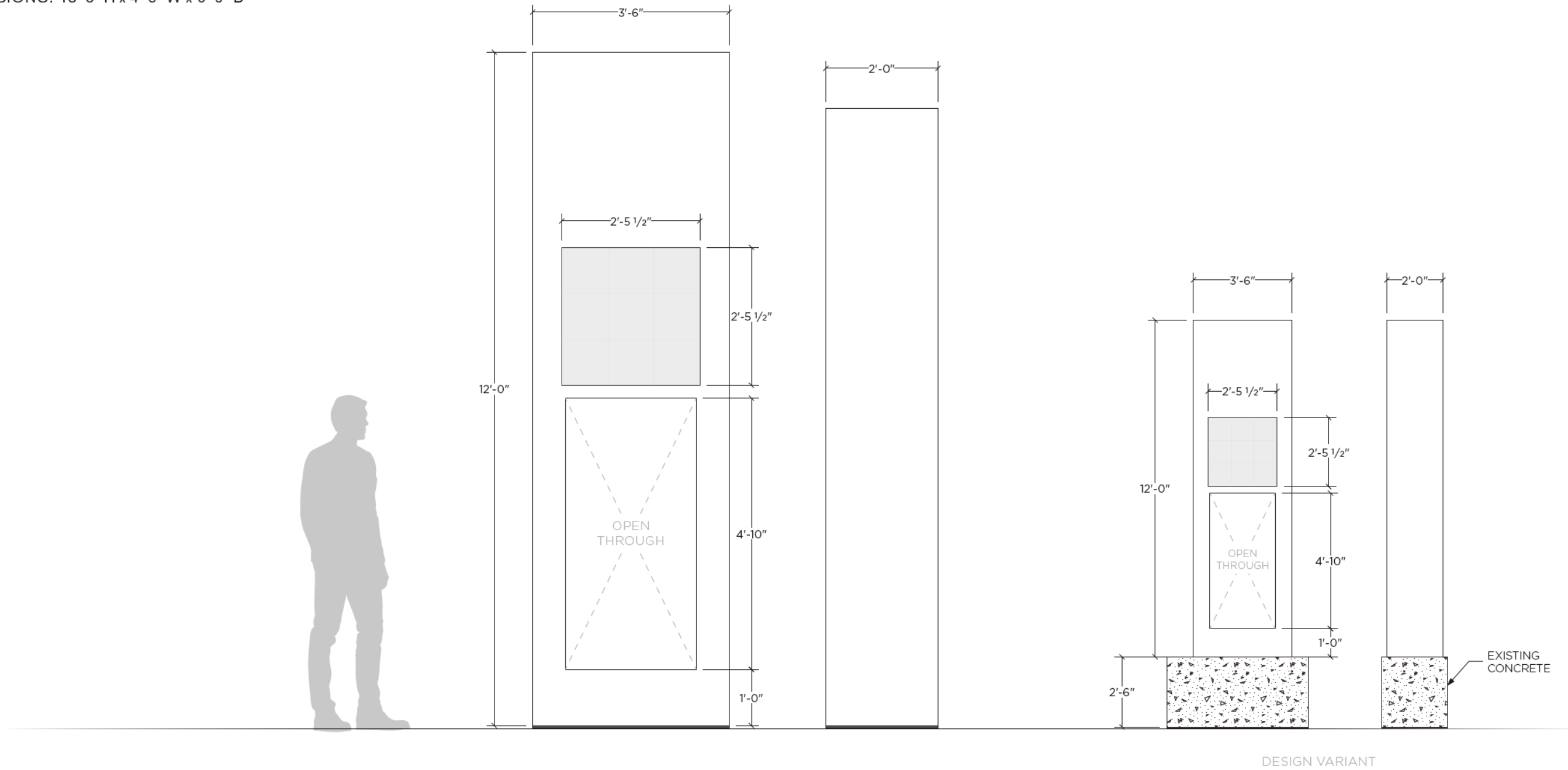


# CAMPUS SIGNAGE GARAGE PYLON

DRAFT

Tube framed welded aluminum cabinet with perforated side panels for ventilation. Screen to be Daktronics LED Outdoor Display. Sign is double-sided; one (1) Daktronics display per face.

EXISTING DIMENSIONS: 13'-0" H x 4'-6" W x 0'-9" D

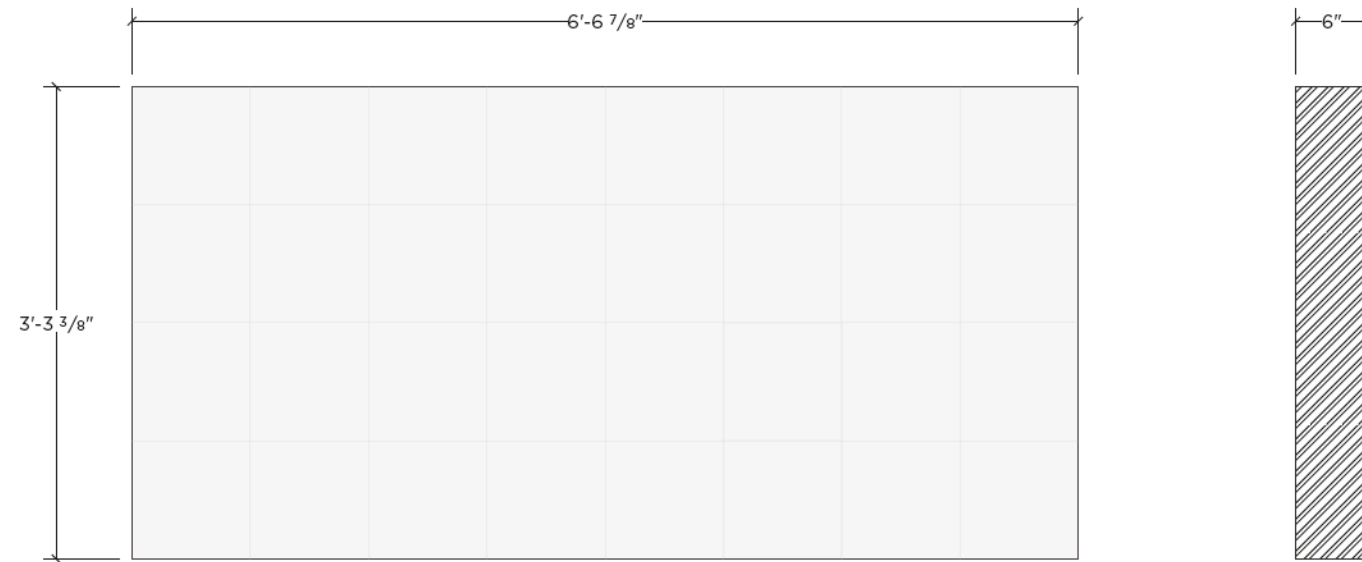


# CAMPUS SIGNAGE **GARAGE WAYFINDING SIGN**

DRAFT

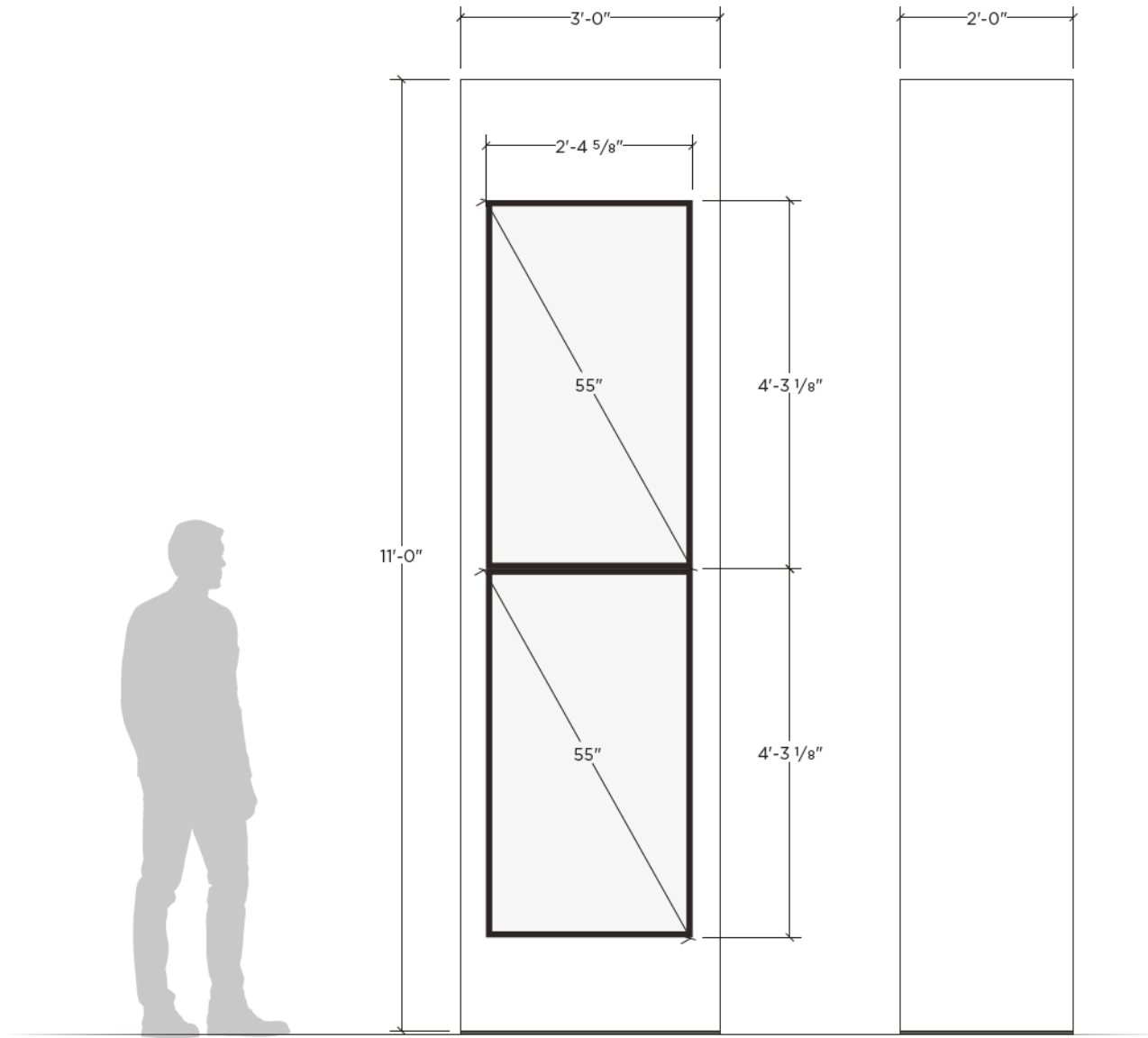
Tube framed welded aluminum cabinet with perforated side panels for ventilation. Screen (1) to be Daktronics LED Outdoor Display.

QUANTITY AND DIMENSIONS TBD.



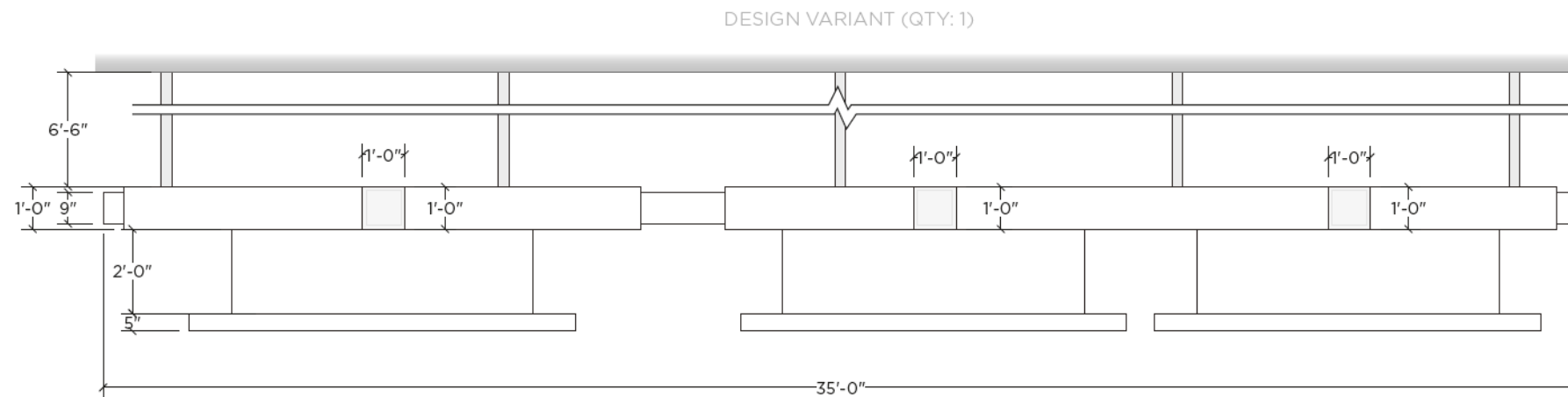
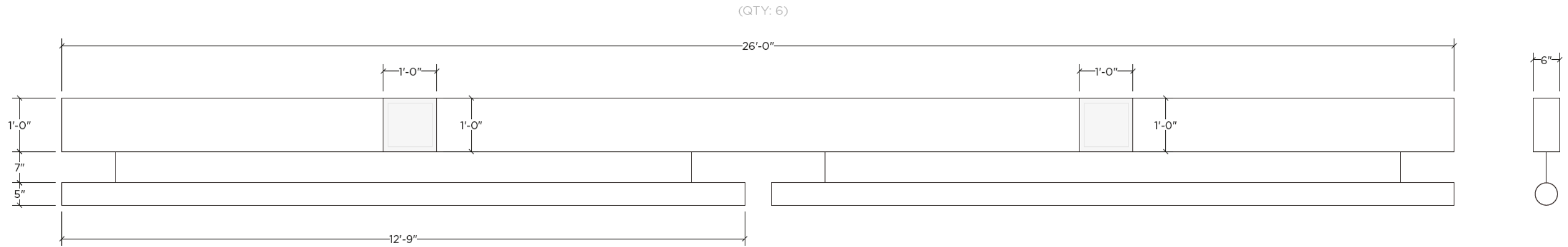
Tube framed welded aluminum cabinet with perforated side panels for ventilation. Two (2) 55" Samsung Outdoor LCD screens stacked per face. An internally illuminated logo will be displayed at the top of the sign face (2). Sign is double sided; four (4) total LCD displays per sign.

QUANTITY AND DIMENSIONS TBD.



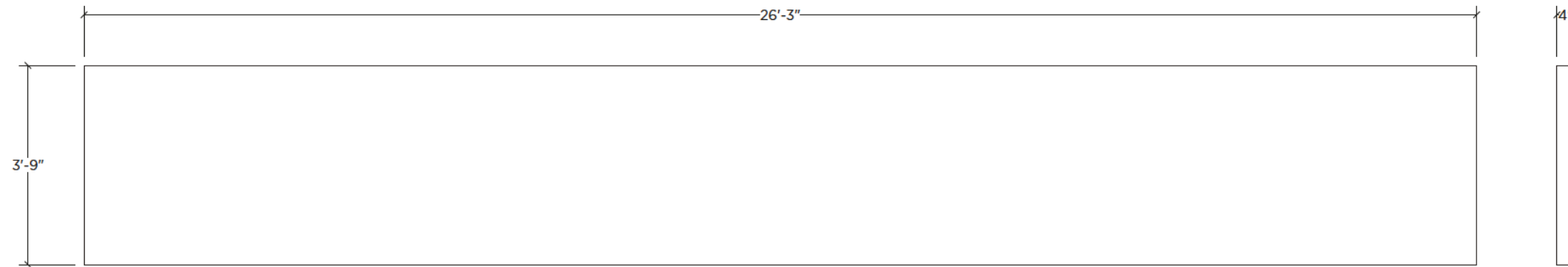
Welded aluminum cabinet sign. Internally illuminated lettering and LED lane indicators to be displayed on sign face. PVC clearance bars to hang below cabinet.

DIMENSIONS EQUAL TO EXISTING CONDITIONS.



Welded aluminum cabinet sign. An internally illuminated logo to be displayed on sign face (1).

DIMENSIONS TBD.



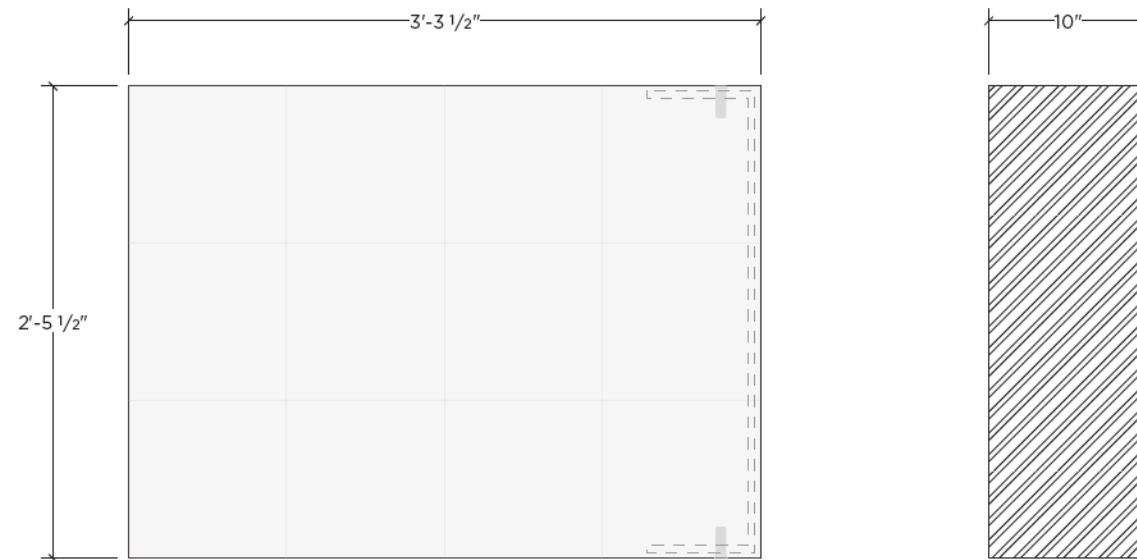


# CAMPUS SIGNAGE **GARAGE BLADE**

DRAFT

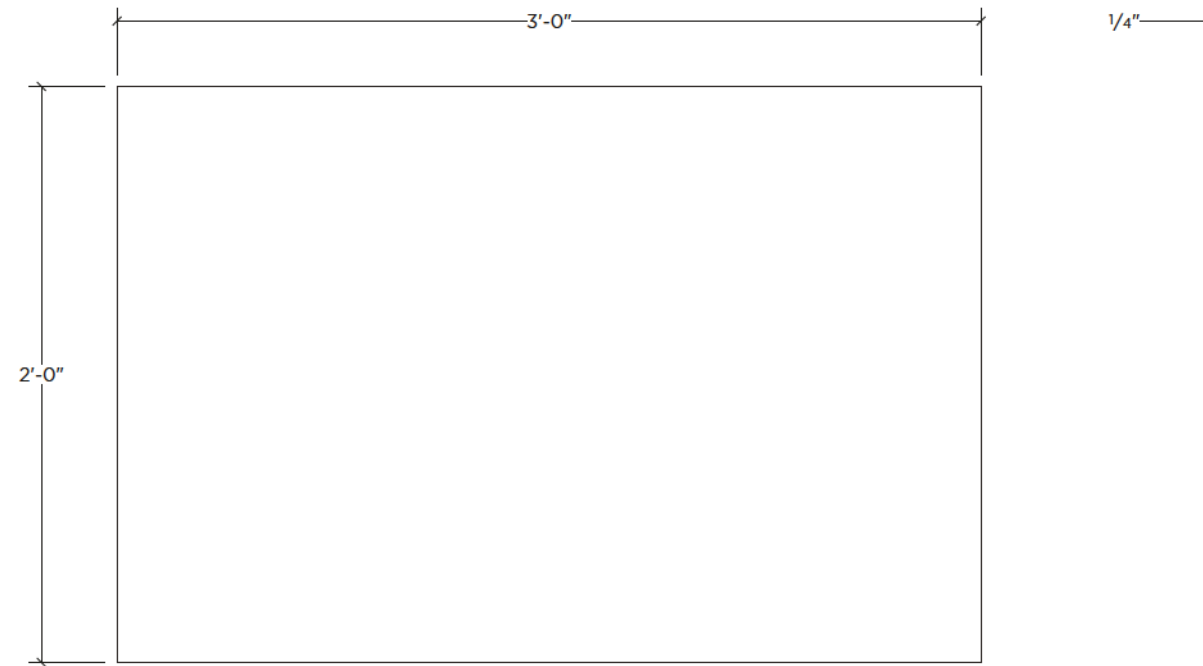
Tube framed welded aluminum cabinet with perforated side panels for ventilation. Screen to be Daktronics LED Outdoor Display. Sign is double-sided; one (1) Daktronics display per face.

QUANTITY AND DIMENSIONS TBD.



Aluminum panel sign.

QUANTITY AND DIMENSIONS TBD.



## **APPENDIX C - LIGHT AND GLARE MEMO**



**Seattle Center  
Signage Plan**



**SEPA Analysis - Lighting**  
March 26, 2021

Prepared for:

Environmental Science Associates



Consultant:



# Table of Contents

1.0	EXECUTIVE SUMMARY .....	3
2.0	INTRODUCTION .....	3
3.0	APPLICABLE CODES AND POLICIES .....	3
3.1	SEPA Policies .....	3
3.2	Seattle Municipal Code.....	3
4.0	LIGHTING TERMS .....	4
5.0	EXISTING CONDITIONS.....	5
5.1	Seattle Center Site, Setting, and Existing Signage.....	5
6.0	EXISTING LIGHT AND GLARE IN THE AREA .....	9
6.1	Project Site.....	9
6.2	Area Surrounding Project Site .....	11
7.0	PROPOSED SIGN LIGHTING.....	12
7.1	Seattle Center.....	12
7.2	Impacts.....	13
7.2.1	Glare.....	13
7.2.2	Spill Light .....	14
7.4	Sky Glow .....	14
8.0	PROPOSED MITIGATION MEASURES .....	14
8.1	LED Board Design.....	14

## **1.0 EXECUTIVE SUMMARY**

The proposed update to the Seattle Center Signage does not provide significant adverse impacts pertaining to light and glare. Lighting elements incorporated with the campus signage is consistent with existing lighting within and surrounding the Seattle Center. New light-emitting diode (LED) or liquid-crystal display (LCD) displays associated with wayfinding pylons, pole banners, art walk displays, and information kiosks located within the Seattle Center provide minimal to low levels of light and glare impacts. LED displays associated with the replacement of the existing digital campus readerboards, facility readerboards, and new digital poster located along the perimeter of the Seattle Center Campus provide minor change to existing conditions and low levels of light and glare impacts in the adjacent right-of-way (ROW) and adjacent properties. The LED displays associated with the new garage wayfinding pylon, and new parking garage signs on the Mercer Street Garage and the 5<sup>th</sup> Avenue North Garage provide additional low levels of light and glare with some moderate levels of glare adjacent to the garage wayfinding signs and garage blade signs.

## **2.0 INTRODUCTION**

This technical memorandum evaluates the proposed lighting associated with the Seattle Center Exterior Campus Signage Plan (Signage Plan) (Populous, 2021) dated February 19, 2021. The Signage Plan includes non-digital signs which are not evaluated as they do not result in light or glare.

The digital components of the revisions to the campus signage include:

- Replacement of the 3 existing LED campus readerboards with new LED displays
- Replacement of 3 existing amber text facility readerboards and two static text with five new LED displays
- Replacement of 17 static wayfinding pylons with 20 wayfinding pylons with LED\LCD displays
- Replacement of 3 information kiosks with 3 kiosks with LED\LCD displays
- Add 3 new art walk display signs with LED displays
- Add 12 new pole banners with LED displays
- Replace the 3 static theater posters with 1 LED display

Digital garage signs include:

- Add 1 new garage wayfinding pylon with LED display
- Replace 4 static garage ID pylons with 4 with LCD displays
- Replace 4 static entry/exit ID signs with 7 with internally illuminated lettering and LED lane indicators
- Replace 4 static and neon wayfinding signs with 2 Garage wayfinding sign with LED displays
- Replace 4 static garage overhead entry signs with 4 overhead entry illuminated signs
- Replace 2 blade signs with 2 Garage blade LED displays

This memo is prepared to support a State Environmental Policy Act (SEPA) Checklist and a Sign Permit under Seattle Municipal Code (SMC) 25.05.

## **3.0 APPLICABLE CODES AND POLICIES**

### **3.1 SEPA Policies**

The SEPA policies concerning light and glare provide that “light and glare” are part of the “Built Environment” to be evaluated under State Environmental Policy Act (WAC 197-11-444(2)(b)(iii)) unless categorically exempt under WAC 197-11-800. SEPA requires agencies to determine whether a proposal creates a probable, significant adverse impact (WAC 197-11-340). It also requires agencies to consider methods to avoid or reduce impacts. This memo addresses both of these directives with regard to light and glare impacts. The City of Seattle (City) has also adopted SEPA for light and glare in SMC 25.05.675.

### **3.2 Seattle Municipal Code**

SMC 23.55 Signs – Section 23.55.054 Seattle Center Sign Overlay District. Provides regulations and standards governing signage. Includes limits to light and glare from illuminated signs and LED displays. To support the modernization, Seattle Center is proposing an amendment to the City’s Sign Code to include regulations for the Center Campus Subarea. The Center Campus Subarea is all of the campus except for the Arena Subarea (see Figure 2 in the SEPA Checklist). The proposed amendments would apply to the Center Campus Subarea only and are presented in Appendix A. Additionally, Seattle Center has updated the Seattle Center Century 21: Signage Guidelines.

## **4.0 LIGHTING TERMS**

Lighting terms used in this document are defined as set forth under the Illuminating Engineering Society (IES) Lighting Handbook, 10<sup>th</sup> Edition:

**Foot-candle (“fc”)** is a description of the amount of light striking a surface. It is equal to 1 lumen per square foot. Some examples of foot-candle (fc) levels are:

Full Moonlight (approximate)	0.02 fc
Lighted Freeway, Average	1.50 fc
Lighted Roadway (Major), Average	1.50 fc
Lighted Roadway (Residential), Average	0.60 fc
Residential Street Light (max)	3.00 fc

**Glare** is the sensation produced by luminance (the amount of light that is reflected from a surface, see competition definition below) within the visual field that is sufficiently greater than the luminance to which the eyes are adapted to, causing annoyance, discomfort, or loss in visual performance and visibility.

Glare is subdivided into direct and reflected elements, as follows:

**Direct glare** describes when an observer can see directly into a luminaire’s light source, where the lamp, reflector or diodes are visible.

**Reflected glare** describes when light reflected from a surface causes reduced visual performance and visibility. It is assumed that the surface is not intentionally a light source. Surfaces attributable to reflected glare will have a higher luminance than adjacent or nearby surfaces.

Glare is position sensitive; a light source that prevents one observer from seeing may help a different observer to see.

**Light trespass** also known as light spillage is when spill light extends beyond the property line of the owner of a light source, and onto or above another owner’s property.

**Luminance** is the amount of light that is reflected from a surface. In general terms it is proportional to the reflectance of the surface and the amount of light striking the surface. It is what we see, but because it varies with the viewer it is difficult to calculate.

**Sky Glow** is the haze or glow of light emitted above the lighting installation which reduces the ability to view the darkened night sky. This is a combination of light emitted directly from the light source, light reflected upward from the illuminated surface, and light reflected from airborne particles between the light source and the illuminated surface.

**Spill light** is light from a source which does not strike the area intended for illumination. Spill light can be characterized by foot-candles (fc) calculated or measured in a vertical plane.

Figure 1 illustrates spill light, direct glare, reflected light and light trespass.



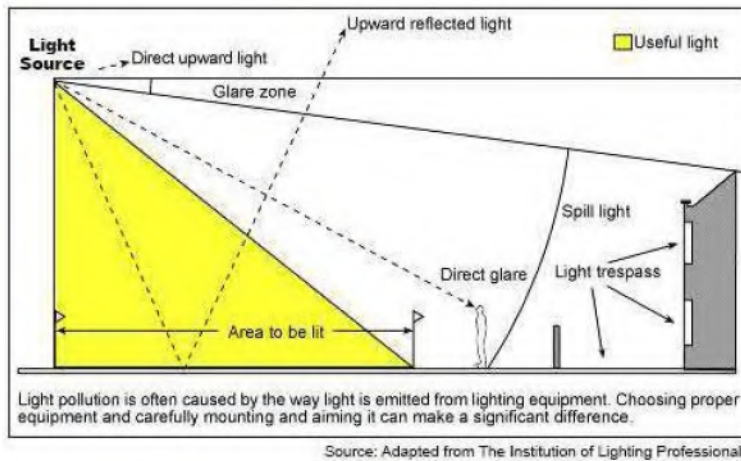


Figure 1 - Spill Light, Direct Glare, Reflected Light, and Light Trespass

## **5.0 EXISTING CONDITIONS**

### **5.1 Seattle Center Site, Setting, and Existing Signage**

The Seattle Center Campus is zoned Seattle Mixed Uptown, SM-UP 95(M). Seattle Mixed zoning allows development that includes residential and commercial uses, as well as public open space and recreation uses such as those at Seattle Center. Existing development surrounding Seattle Center consists of residential and commercial uses, while Seattle Center is composed primarily of open space, entertainment, and recreation uses.

A survey of the existing signage was conducted by Christopher Fote on December 22, 2020 and February 24, 2021. The existing signage was reviewed to determine type, size, makeup, and location. The most prominent signs are the two campus readerboards located at the SW corner of the intersection of 5<sup>th</sup> Avenue North with Mercer Street and at the NW corner of the intersection of Denny Way and Broad Street (Photos A and B). These two signs are on the perimeter of the Seattle Center adjacent to City arterial streets.

Less prominent digital signage on the perimeter of the Seattle Center includes three digital amber text readerboards along Mercer Street at McCaw Hall, Cornish Playhouse, and Seattle Rep Theater (Photo C). One additional campus readerboard with amber text is on the northeast corner of the intersection of 5<sup>th</sup> Avenue North with Harrison Street for the 5<sup>th</sup> Avenue parking garage (Photo D). Signage within the interior of Seattle Center site consists of static signage associated with the free-standing wayfinding pylons, information kiosks, and banners attached to existing light posts (Photos E and F). Photo P shows the three theater posters on Mercer Street in front of McCaw Hall.

Existing garage signs are primarily static text signs with amber text only on the four entry and exist ID signs (Photos G through O).

**Photos of Existing Signage**



**A - Campus Readerboard 5<sup>th</sup> Avenue N at Mercer Street**



**B - Campus Readerboard Denny Way at Broad Street**



**C - Facility Readerboard Mercer Street**



**D - Campus Readerboard 5<sup>th</sup> Avenue N at Harrison Street**



E - Sign Mounted to Light Post



F - Wayfinding Pylon



G - Mercer Street Garage - Roy Street



H - Mercer Street Garage - Roy Street



I – Mercer Street Garage – 3<sup>rd</sup> Avenue North



J - Mercer Street Garage – 3<sup>rd</sup> Avenue North



K – Residential Building – Mercer Street at 3<sup>rd</sup> Avenue North



L - Mercer Street Garage – Mercer Street



M – Mercer Street Garage – 4<sup>th</sup> Avenue North



N - Mercer Street Garage – 4<sup>th</sup> Avenue North Entry