



GENERAL NOTES

- THESE DRAWINGS DEPICT GENERAL LOCATIONS OF LIFE SAFETY EQUIPMENT & FIELD DEVICES. EXACT ROUTING OF CONDUITS TO BE DETERMINED IN THE FIELD BY THE INSTALLING CONTRACTOR TO SUIT CONDITIONS. ALL CHANGES SHALL BE CLEARLY INDICATED ON THE RECORD DRAWINGS.
- SHOULD ANY CONDITIONS EXIST THAT DIFFER FROM WHAT IS INDICATED ON THESE DRAWINGS WHICH CAUSE MAJOR DEVIATIONS IN THE WORK SHOWN, THE CONTRACTOR SHALL CONTACT SIMPLEXGRINNELL IN A TIMELY MANNER SO AS NOT TO IMPAIR THE CONSTRUCTION SCHEDULE.
- CONTRACTOR IS RESPONSIBLE FOR MAKING AND OBTAINING APPROVAL FOR ALL NECESSARY ADJUSTMENTS IN CIRCUITING AS REQUIRED TO ACCOMMODATE THE RELOCATION OF EQUIPMENT AND/OR DEVICES WHICH ARE AFFECTED BY ANY AUTHORIZED CHANGE. ALL CHANGES SHALL BE CLEARLY INDICATED ON THE RECORD DRAWINGS.
- A STAMPED SET OF APPROVED FIRE ALARM DRAWINGS SHALL BE AT THE JOB SITE AND SHALL BE USED FOR INSTALLATION.
- THE POWER CIRCUIT TO THE FACP AND TO THE FIRE ALARM POWER SUPPLIES SHALL BE ON A DEDICATED 120V, 20A BRANCH CIRCUIT BREAKER, AND SHALL HAVE A RED WIRING, LOCK-ON PROVISION AND SHALL BE IDENTIFIED AS "FIRE ALARM CIRCUIT CONTROL." THE LOCATION OF THE CIRCUIT DISCONNECT MEANS (CIRCUIT BREAKER) SHALL BE PERMANENTLY IDENTIFIED AT THE FIRE ALARM CONTROL UNIT.
- UPDATE THE AS-BUILT DRAWING SET DAILY WITH JOB PROGRESS. RETURN THE AS-BUILT DRAWING SET TO SIMPLEXGRINNELL NO LATER THAN 7 DAYS AFTER FINAL TEST.
- THE CONTRACTOR WILL MAINTAIN ALL AREAS OF THE BUILDING IN A NEAT AND WORKMAN LIKE MANNER.
- DO NOT APPLY POWER EXCEPT IN THE PRESENCE OF A FACTORY TRAINED SIMPLEXGRINNELL TECHNICAL REPRESENTATIVE.
- ANY SMOKE DETECTOR HEAD INSTALLED BEFORE THE BUILDING IS CLEANED AND ACCEPTED SHALL BE COVERED TO PROTECT FROM DUST. ANY FALSE ALARMS DUE TO DIRT CONTAMINATED HEADS SHALL BE THE RESPONSIBILITY OF THE FIRE ALARM INSTALLER.
- THE FIRE ALARM INSTALLER WILL MAINTAIN THE FIRE RESISTANCE INTEGRITY OF ALL WALL, CEILING, AND ROOF ASSEMBLIES ANY TIME THAT WORK IS NOT ACTIVELY BEING PERFORMED.
- INSTALLATION OF DEVICES SHALL BE IN ACCORDANCE WITH MANUFACTURER'S INSTRUCTIONS. POWER LIMITED AND NON-POWER LIMITED FIELD WIRING MUST BE INSTALLED WITHIN THE FACP ENCLOSURE IN ACCORDANCE WITH MANUFACTURER'S INSTRUCTIONS AND NEC.
- ALL WIRING SHALL BE INSTALLED ACCORDING TO NFPA 70 (NEC).
- FIRE ALARM CIRCUITS SHALL BE IDENTIFIED IN ACCORDANCE WITH APPROPRIATE SECTION OF NEC 760. MARK ALL FIRE ALARM WIRES IN ACCORDANCE WITH 760 FOR POWER LIMITED AND NON-POWER LIMITED WIRE.
- FIRE ALARM CABLE INSTALLED IN DUCTS, PLENUM, AND OTHER SPACES USED FOR ENVIRONMENTAL AIR SHALL BE TYPE FPLP.
- FIRE ALARM CABLE INSTALLED IN THE VERTICAL RUNS AND PENETRATE MORE THAN ONE FLOOR OR CABLES INSTALLED IN VERTICAL RUNS IN SHAFTS SHALL BE TYPE FPLR.
- FIRE ALARM CABLE INSTALLED IN UNDERGROUND CONDUIT OR OTHER WET LOCATIONS SHALL BE UL LISTED FOR WET LOCATIONS.
- FIRE ALARM CIRCUITS EXTENDING BEYOND ONE BUILDING AND RUN OUTDOOR SHALL BE INSTALLED IN ACCORDANCE WITH NFPA 70 ARTICLES 760, 770, 725 AND 800 WHERE APPLICABLE.
- ALL WIRING, INCLUDING SHIELDS MUST BE DRY AND FREE OF CONDENSATION AND GROUNDS.
- ALL SHIELDED WIRE MUST HAVE SHIELD CONTINUITY AT FULL LENGTH OF THE WIRE.
- ONLY SYSTEM WIRING CAN BE RUN IN THE SAME CONDUIT.
- 120VAC IS NOT PERMITTED IN THE SAME CONDUIT WITH LOW VOLTAGE WIRING.
- MAINTAIN 40 PERCENT CONDUIT FILL RATIO AS PER NEC REQUIREMENTS.
- EXISTING CONDUITS MAY BE USED BY THE INSTALLATION CONTRACTOR AS DEEMED NECESSARY. HOWEVER, ANY EXISTING CONDUIT WILL BE USED ONLY IF CONDUITS MEET CURRENT STANDARDS AND CODES. SIMPLEXGRINNELL MAKES NO STATEMENTS WRITTEN OR VERBAL AS TO THE CONDITION OF EXISTING CONDUITS.

WIRE SCHEDULE

FIRE ALARM WIRE LIST			
CIRCUIT DESCRIPTION	RISER RATED: FPLR	SINGLE CONDUCTOR(THIN/TFN)	PLENUM RATED: FPLP
B RUI/N2 COMMUNICATION 1 PAIR 18 AWG TWISTED OVERALL SHIELD	SG ANIX/PAIGE 740215 AREA=0.0196 SQ. INCH ANIXTER PART NUMBER 740215	(2) #14 AWG AREA=0.0097 SQ. INCH (EACH)	SG ANIX/PAIGE 740214L AREA=0.0196 SQ. INCH ANIXTER PART NUMBER FAMC-1802C-1-1-2S-0385
D DOOR HOLDER CIRCUIT 2 CONDUCTOR TWISTED PAIR 14 AWG SOLID	SG ANIX/PAIGE 454718ARE AREA=0.0380 SQ. INCH ANIXTER PART NUMBER FA-1402C-1-1N-03-BX	(2) #14 AWG AREA=0.0097 SQ. INCH (EACH)	SG ANIX/PAIGE 454719ARE AREA=0.0333 SQ. INCH ANIXTER PART NUMBER FA-1402C-1-2N-03
M MAPNET/INET CIRCUIT 1 PAIR 18 AWG TWISTED OVERALL SHIELD	SG ANIX/PAIGE 740215 AREA=0.0196 SQ. INCH ANIXTER PART NUMBER 740215	(2) #14 AWG AREA=0.0097 SQ. INCH (EACH)	SG ANIX/PAIGE 740214L AREA=0.0196 SQ. INCH ANIXTER PART NUMBER FAMC-1802C-1-1-2S-0385
M NAC TRIP CIRCUIT 1 PAIR 14 AWG	EXISTING		
P POWER CIRCUIT 2 CONDUCTOR 14 AWG SOLID (SUBSCRIP T F RESETTABLE)	SG ANIX/PAIGE 454718ARE AREA=0.0380 SQ. INCH ANIXTER PART NUMBER FA-1402C-1-1N-03-BX	(2) #14 AWG AREA=0.0097 SQ. INCH (EACH)	SG ANIX/PAIGE 454719ARE AREA=0.0333 SQ. INCH ANIXTER PART NUMBER FA-1402C-1-2N-03
R RELAY CIRCUIT 2 CONDUCTOR 14 AWG SOLID	SG ANIX/PAIGE 454718ARE AREA=0.0380 SQ. INCH ANIXTER PART NUMBER FA-1402C-1-1N-03-BX	(2) #14 AWG AREA=0.0097 SQ. INCH (EACH)	SG ANIX/PAIGE 454719ARE AREA=0.0333 SQ. INCH ANIXTER PART NUMBER FA-1402C-1-2N-03
S AUDIO CIRCUIT 1 PAIR 14 AWG TWISTED OVERALL SHIELD	SG ANIX/PAIGE 454726BRE AREA=0.0373 SQ. INCH ANIXTER PART NUMBER FA-1402C-1-1S-03	(2) #14 AWG AREA=0.0097 SQ. INCH (EACH)	SG ANIX/PAIGE 454727ARE AREA=0.0340 SQ. INCH ANIXTER PART NUMBER FA-1402C-1-2S-03
V VISUAL/SIGNAL CIRCUIT - 2 CONDUCTOR 14 AWG STRANDED	ANIXTER PART NUMBER FA-1402C-2-1N-03 AREA=0.0449 SQ. INCH	(2) #14 AWG AREA=0.0097 SQ. INCH (EACH)	SG ANIX/PAIGE 454696ARE AREA=0.0356 SQ. INCH ANIXTER PART NUMBER FA-1402C-2-2N-03
Z ZONE CIRCUIT 2 CONDUCTOR 14 AWG SOLID	SG ANIX/PAIGE 454718ARE AREA=0.0380 SQ. INCH ANIXTER PART NUMBER FA-1402C-1-1N-03-BX	(2) #14 AWG AREA=0.0097 SQ. INCH (EACH)	SG ANIX/PAIGE 454719ARE AREA=0.0333 SQ. INCH ANIXTER PART NUMBER FA-1402C-1-2N-03
Z BATTERY 2 CONDUCTOR 14 AWG THIN	EXISTING		
CONDUIT SIZE	CONDUCTOR AREA	CONDUIT SIZE	CONDUCTOR AREA
3/4"	0.12 SQ INCH •	1-1/2"	0.69 SQ INCH •
1"	0.34 SQ INCH •	2"	1.34 SQ INCH •
40% FILL PER N.E.C.			

THE CABLES SPECIFIED HERE ARE FOR REFERENCE OF REQUIRED ELECTRICAL CHARACTERISTICS AS WELL AS CODE REQUIREMENTS. ALTERNATE SUPPLIES MAY BE SUBSTITUTED PROVIDING EQUIVALENT CHARACTERISTICS ARE MAINTAINED. ITEMS SUCH AS CAPACITANCE BETWEEN CONDUCTORS AND WIRE GAUGE CAN BE CRUCIAL TO THE CIRCUIT DESIGN OF THIS SYSTEM INSTALLATION.  
REFERENCE <https://www.anixter.com/customer/tycofs> FOR SG ANIXTER CABLE DATA

GENERAL NOTE

ELECTRICAL CONTRACTOR ASBUILTS

- ELECTRICAL CONTRACTOR IS RESPONSIBLE FOR PROVIDING SIMPLEXGRINNELL WITH ACCURATE REDEFINED DRAWINGS. DRAWINGS SHALL BE REDEFINED AS NECESSARY TO SHOW THE FOLLOWING:
  - DEVICE LOCATIONS - ADDS/DELETES.
  - CIRCUIT NUMBERS - ADDRESSABLE/SIGNAL/AUXILIARY/ZONE.
  - WIRE/CONDUIT - ACCURATE ROUTING.
  - WIRE FILL - USING WIRE CODE.
  - EDL - RESISTOR LOCATIONS.
- SIMPLEXGRINNELL WILL PROVIDE (UPON REQUEST) A BLANK SET OF FLOOR PLANS TO BE REDEFINED. SIMPLEXGRINNELL WILL INCORPORATE ALL REDEFINED CHANGES INTO THE RECORD AUTOCAD SET OF DRAWINGS.

SYSTEM DESCRIPTION / SCOPE OF WORK

OCCUPANCY TYPE: B BUSINESS GROUP

MODIFY EXISTING FIRE ALARM SYSTEM. PROVIDE NEW DEVICES, RELOCATE AND DEMO EXISTING DEVICES AS SHOWN ON DRAWINGS. EXISTING DEVICES & PANELS ARE TO REMAIN. NEW NAC EXPANDER PANEL WILL BE USED TO POWER ALL NEW NOTIFICATION DEVICES. SPEAKER CIRCUITS WILL BE FEED FROM EXISTING AMP ON TRANSPODER #2. NEW INITIATING DEVICES WILL BE WIRING ON A NEW INET (M4) CIRCUIT BACK TO TRANSPODER #2. ALL NEW AND EXISTING NAC EXPANDER TO BE TRIP VIA INET M4.

ALL NEW WIRING TO BE CLASS B.

THE EXISTING FIRE ALARM SYSTEM SHALL NOT BE DISCONNECTED OR TAKEN OUT OF SERVICE WITHOUT WRITTEN PERMISSION FROM THE OWNER. IT IS THE CONTRACTOR'S RESPONSIBILITY TO COORDINATE WITH THE OWNER THE TIMING OF ANY EXISTING FIRE ALARM SYSTEM DEMOLITION WORK.

FIRE ALARM APPLICABLE CODES & STANDARDS

WASHINGTON ADMINISTRATIVE CODE CHAPTERS 51-54, 2012 (AMENDED INTERNATIONAL FIRE CODE (IFC), 2012 EDITION)

NATIONAL FIRE ALARM CODE (NFPA 72), 2010 EDITION

NATIONAL ELECTRIC CODE (NFPA 70), 2008 EDITION

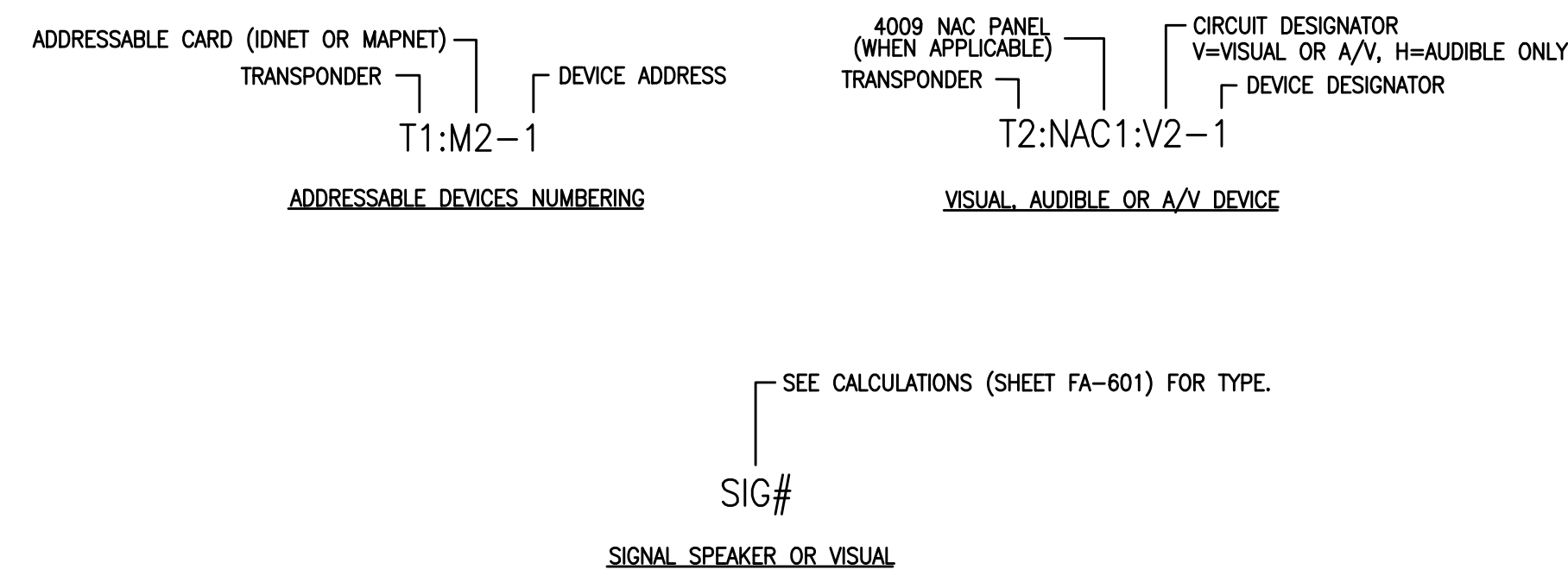
ELEVATOR CODE - ASME A17.1-2004, ASME A17.1A-2005

JURISDICTIONS WITHIN THE STATE MAY HAVE AMENDMENTS TO THE STATE ADOPTED CODE. CHECK WITH THE LOCAL JURISDICTION AUTHORITY FOR MORE DETAILS.

ABBREVIATIONS LEGEND

- |  |   |
|--|---|
| AC = ABOVE CEILING                     | HT = HEIGHT                                     |
| C = CEILING MOUNTED                    | HVAC = HEATING, VENTILATION, & AIR CONDITIONING |
| EX = EXISTING TO REMAIN                | IMS = INFORMATION MANAGEMENT SYSTEM             |
| RO = EXISTING TO REMOVE AND COVER      | MAX = MAXIMUM                                   |
| RE = EXISTING DEVICE TO BE RELOCATED   | MIN = MINIMUM                                   |
| RL = RELOCATED DEVICE                  | N/A = NOT APPLICABLE                            |
| RR = REMOVE EXISTING AND REPLACE W/NEW | NAC = NOTIFICATION APPLIANCE CIRCUIT EXTENDER   |
| WP = WEATHERPROOF                      | NDU = NETWORK DISPLAY UNIT                      |
| XP = EXPLOSION PROOF                   | NEC = NATIONAL ELECTRICAL CODE                  |
| H = HIGH HUMIDITY                      | NFPA = NATIONAL FIRE PROTECTION ASSOCIATION     |
| AFF = ABOVE FINISHED FLOOR             | NFC = NOT IN CONTRACT                           |
| AHJ = AUTHORITY HAVING JURISDICTION    | NPU = NETWORK PROCESSING UNIT                   |
| ALP = ALARM                            | NTS = NOT TO SCALE                              |
| ANN = ANNUNCIATOR                      | PAP = PRE-ACTION PANEL                          |
| BMS = BUILDING MANAGEMENT SYSTEM       | SCC = STATUS COMMAND CENTER                     |
| CB = CALIFORNIA BUILDING CODE          | SLC = SIGNALING LINE CIRCUIT                    |
| CD = (eg. 15C) CANDELA                 | SMK = SMOKE                                     |
| CSFM = CALIFORNIA STATE FIRE MARSHAL   | SUPRV = SUPERVISORY                             |
| DET = DETECTOR                         | TAC = TRUEALERT ADDRESSABLE CONTROLLER          |
| DGP = DATA GATHERING PANEL             | TBL = TROUBLE                                   |
| EOL = END OF LINE                      | TS = TAMPER SWITCH                              |
| EPO = EMERGENCY POWER OFF              | UON = UNLESS OTHERWISE NOTED                    |
| FACP = FIRE ALARM CONTROL PANEL        | VCC = VOICE COMMAND CENTER                      |
| FATC = FIRE ALARM TERMINAL CABINET     | VT = VALVE TAMPER                               |
| FBO = FURNISHED BY OTHERS              | WF = WATER FLOW                                 |
| FCO = FIRE COMMAND CENTER              | W = (eg. 1/2W) WATT                             |
| FAA = FIRE ALARM ANNUNCIATOR           | W/ = WITH                                       |
| FTR = FIRE ALARM TRANSPODER            | W/O = WITH OUT                                  |
| FSD = FIRE SMOKE DAMPER                |   |

DEVICE ADDRESSING LEGEND



SEQUENCE OF OPERATION

Sequence of Operation	Manual Station	Smoke Detection	1st Fir Elev Lobby Smoke Detection	1st Fir Smoke Detection Elev Lobbies Except Elev Mach Rm	Smoke Detection	Heat Detection	System Trouble	Duct Smoke Detection
Activation of Local Alarm at FACP (LCD Display & Audible Indication)	X	X	X	X	X	X		
Activation of Local Alarm at Annunciator	X	X	X	X	X	X		
Activate all Audible/Visible Devices	X	X	X	X	X	X		
Release Door Holders	X	X	X	X	X	X		
Close Smoke/Fire Dampers	X	X	X	X	X	X		
Primary Elevator Recall Recall to First Floor				X	X			
Alternate Elevator Recall Recall to Second Floor			X					
Transmit Alarm Signal To Central Station Monitor	X	X	X	X	X	X		
Trouble Indication at FACP							X	
Trouble Indication at Annunciator							X	
Transmit Trouble Signal To Central Station Monitor							X	
Supv. Indication at FACP								X
Supv. Indication at Annunciator								X
Transmit Supv. Signal To Central Station Monitor								X

SYMBOL KEY

FIRE ALARM SYMBOLS LEGEND			
SYMBOL	DESCRIPTION	MODEL#	COMMONLY USED BACKBOX, REFER TO DATA SHEET FOR OTHER OPTIONS
[FACP]	FIRE ALARM CONTROL PANEL W / VARIOUS BATTERY SETS	SIMPLEX 4100-9111	EXISTING FACP
[NAC]	NAC EXPANDER PANEL # DESIGNATES THE NAC PANEL NUMBER W / 6.2AH BATTERY SET	SIMPLEX 4009-9201 SIMPLEX 2081-9272	SUPPLIED BY SIMPLEXGRINNELL
[MFRM]	FIRE ALARM TRANSPODER PANEL	SIMPLEX 4100-9600	EXISTING TRANSPODER
[KHSS]	KITCHEN HOOD	SUPPLIED BY OTHERS	SUPPLIED BY OTHERS
MC [WP]	WEATHERPROOF WALL MOUNT MULTI-CANDELA STROBE ONLY WHITE # =CANDELA RATING	SIMPLEX 4906-9106	SUPPLIED BY SIMPLEXGRINNELL
MC [W]	WALL MOUNT MULTI-CANDELA SPEAKER/STROBE WHITE # =CANDELA RATING, #W = SPEAKER TAP **USE 25 VOLT TAP**	SIMPLEX 4906-9153	4" SQUARE BOX 1 1/2" DEEP W/ 1 1/2" EXTENSION RING W/4905-9947 ADAPTER SKIRT WHEN SURFACE MOUNTED
MC [W] C	CEILING MOUNT MULTI-CANDELA SPEAKER/STROBE WHITE # =CANDELA RATING, #W = SPEAKER TAP **USE 25 VOLT TAP**	SIMPLEX 4906-9154	4" SQUARE BOX 1 1/2" DEEP W/ 1 1/2" EXTENSION RING
MC [C]	CEILING MOUNT MULTI-CANDELA STROBE ONLY WHITE # =CANDELA RATING	SIMPLEX 4906-9104	HANDY BOX 1 1/2" DEEP
MC [C] W	WALL MOUNT MULTI-CANDELA STROBE ONLY WHITE # =CANDELA RATING	SIMPLEX 4906-9103	4" SQUARE BOX 1 1/2" DEEP W/4905-9937 ADAPTER SKIRT WHEN SURFACE MOUNTED
[F]	MANUAL PULL STATION	SIMPLEX 4099-9001	SINGLE GANG BOX 2 1/2" DEEP
[S]	SMOKE SENSOR / BASE	SIMPLEX 4098-9714 SIMPLEX 4098-9792 BASE	4" OCTAGONAL BOX 1 1/2" DEEP
[H]	HEAT SENSOR / BASE	SIMPLEX 4098-9733 SIMPLEX 4098-9792 BASE	4" OCTAGONAL BOX 1 1/2" DEEP
[D]	DUCT SMOKE SENSOR	SIMPLEX 4098-9756	MOUNT TO DUCTWORK
[O]	DOOR HOLDER	SUPPLIED BY OTHERS	SUPPLIED BY OTHERS
[J]	JUNCTION/PULL BOX	SUPPLIED BY OTHERS	SUPPLIED BY OTHERS
[TS]	TAMPER SWITCH	SUPPLIED BY OTHERS	INSTALLED BY MECHANICAL CONTRACTOR
[W]	WATERFLOW SWITCH	SUPPLIED BY OTHERS	INSTALLED BY MECHANICAL CONTRACTOR
[R]	END-OF-LINE RESISTOR 3.3K (EOL)	SIMPLEX 4081-9002	
[R]	END-OF-LINE RESISTOR 4.7K (EOL)	SIMPLEX 4081-9003	
[R]	END-OF-LINE RESISTOR 6.8K (EOL)	SIMPLEX 4081-9004	
[R]	END-OF-LINE RESISTOR 10K (EOL)	SIMPLEX 4081-9008	
[M]	RELAY IAM	SIMPLEX 4090-9002	4" SQUARE BOX 2 1/8" DEEP W/TWO GANG COVER
[M]	INDIVIDUAL ADDRESSABLE MODULE	SIMPLEX 4090-9001	SINGLE GANG BOX 2 1/2" DEEP WITH COVER
[M]	MONITOR ZAM	SIMPLEX 4090-9101	4" SQUARE BOX 2 1/8" DEEP W/TWO GANG COVER
[S]	SMOKE SENSOR, WITH CO SENSOR BASE	SIMPLEX 4098-9714 SIMPLEX 4098-9770 BASE	4" OCTAGONAL BOX 1 1/2" DEEP
[R]	RELAY	EXISTING	*
[BT]	BEAM DETECTOR "BT" DENOTES TRANSCIVER "BR" DENOTES RECEIVER	SYSTEM SENSOR BEAM1224S	*
[W]	WALL MOUNT MULTI-CANDELA STROBE ONLY, WHITE # = CANDELA RATING	SIMPLEX 4906-9111	4" SQUARE BOX 1 1/2" DEEP W/4905-9940 ADAPTER SKIRT WHEN SURFACE MOUNTED
[W]	SPEAKER ONLY, WALL MOUNT #W = SPEAKER TAP **USE 25 VOLT TAP**	SIMPLEX 4902-9717	4" SQUARE BOX 1 1/2" DEEP W/ 1 1/2" RING W/4905-9942 ADAPTER SKIRT WHEN SURFACE MOUNTED
[W]	EXISTING SPEAKER/STROBE COMBINATION, WALL MOUNT # = CANDELA RATING, #W=SPEAKER TAP **USE 25 VOLT TAP**	SIMPLEX 4903-9356 SIMPLEX 4903-9357	4" SQUARE BOX 1 1/2" DEEP W/ 1 1/2" RING W/4905-9946 ADAPTER SKIRT WHEN SURFACE MOUNTED
[W]	EXISTING STROBE ONLY, WALL MOUNTED # = CANDELA RATING	SIMPLEX 4904-9331 SIMPLEX 4904-9332 SIMPLEX 4904-9333	4" SQUARE BOX 1 1/2" DEEP W/4905-9937 ADAPTER SKIRT WHEN SURFACE MOUNTED

ISSUE NO.	DATE	BY	DESCRIPTION
1	8/15/14	CS	REV. FIELD SURVEY
2	9/01/14	JS	REV. UPDATED CIRCUITS
3	10/16/14	JS	REV. UPDATES & ADOS
4	01/16/15	JS	REV. UPDATES & ADOS
	11/21/2017	JS	REV. RECORD DRAWING

DRAWN BY: J. SERRANO  
 CHECKED BY: C. MCCAMMON  
 ISSUE DATE: 12/24/14  
 JOB #: 458 985980502  
 PROJECT #: SIMPLEXGRINNELL © 2017  
 SYSTEM: FIRE ALARM SYSTEM  
 SHEET:

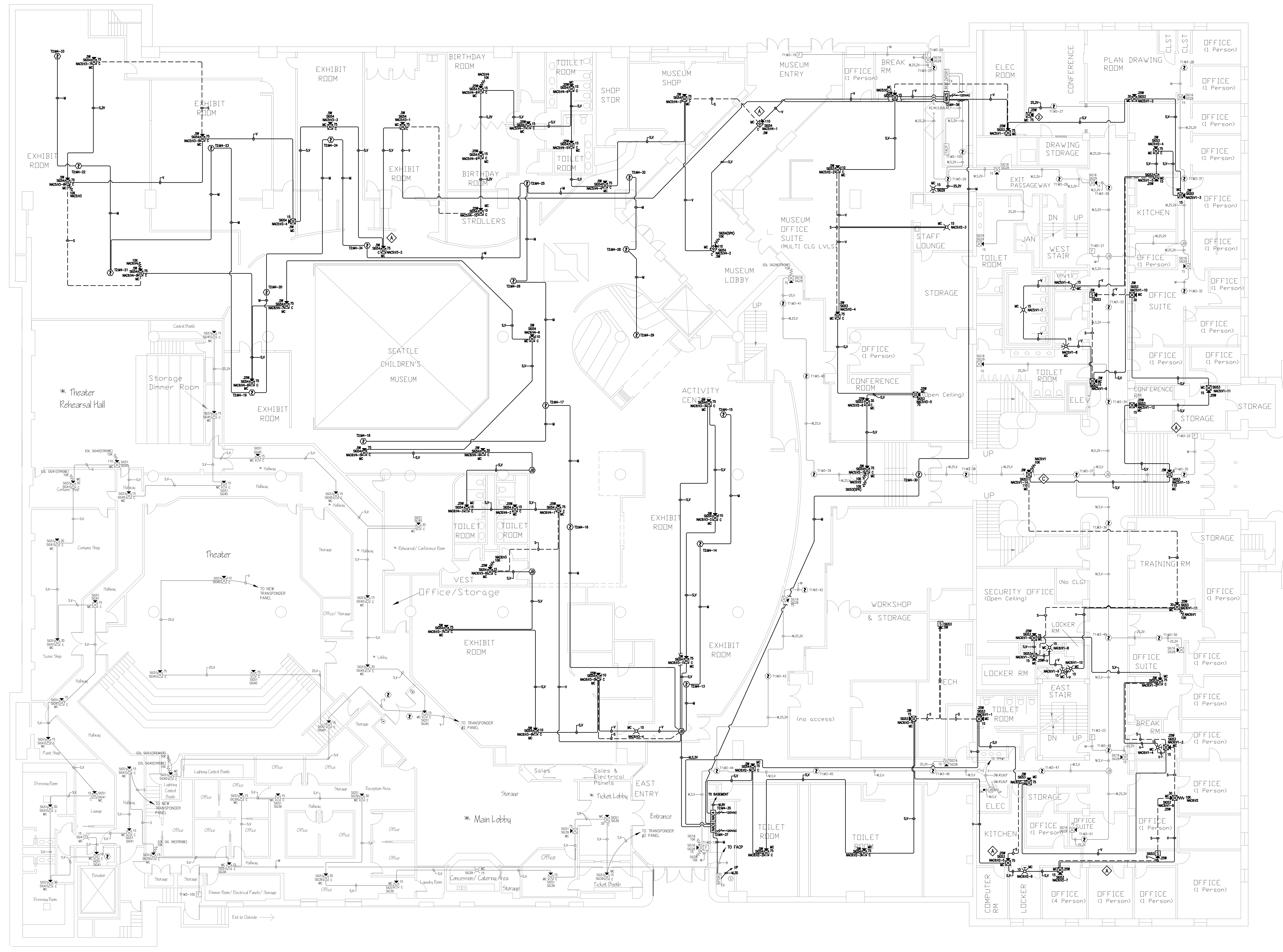
GENERAL INFORMATION

FA-002

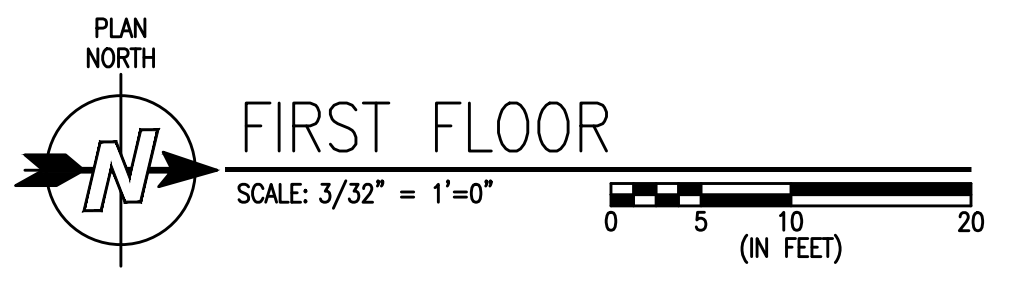




FILE PATH: C:\Users\jmserrano\Documents\Projects\Seattle\Seattle Armory\redline\Rev\_4\CAD\FA\_102.dwg  
 LAST SAVED BY: JASERRANO  
 LAST PRINTED: 11/21/2017 2:42:04 PM  
 30" x 42" - Arch E1 Size



**GENERAL NOTES:**  
 1. GRAY EXISTING DEVICES & CONDUIT ARE EXISTING TO REMAIN.  
 2. NEW DEVICES WILL BE TO INNET #4 (M4) ON TRANSPONDER 2  
 3. ALL EXISTING AND NEW NAC EXPANDER PANELS WILL BE TRIP VIA INNET #4.



**tyco**  
 SimplexGrinnell  
 Safer. Smarter. Tyco.<sup>SM</sup>  
 DISTRICT 455  
 305 HARRISON STREET, SUITE 100  
 SEATTLE, WA 98109  
 SERVICE: 206.291.1400  
 FAX: 206.291.1500

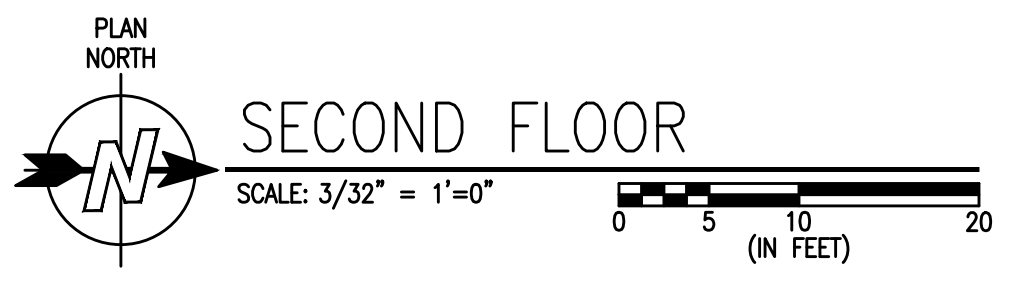
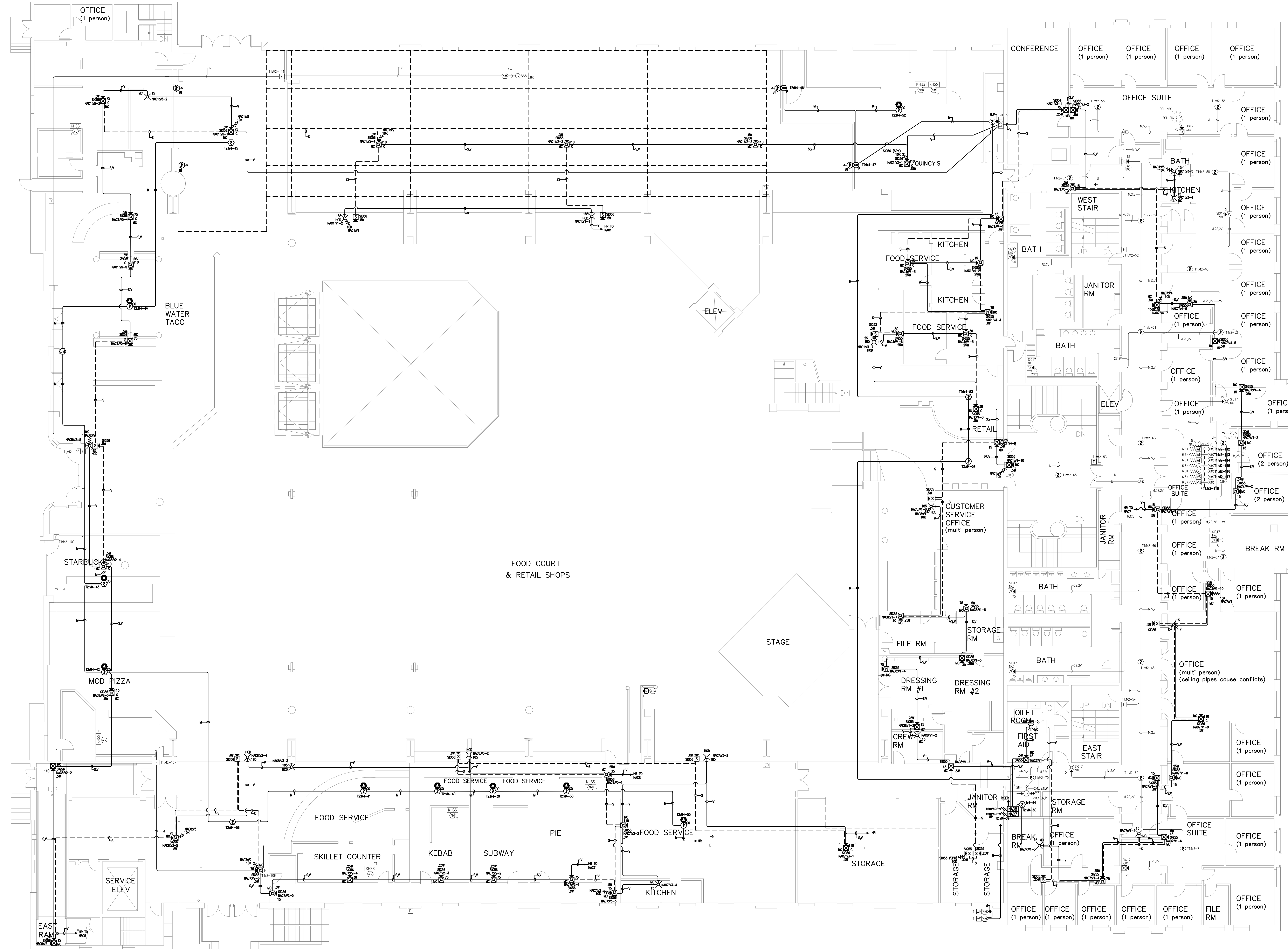
**SEATTLE CENTER  
 ARMORY**  
 CENTER HOUSE  
 305 HARRISON ST  
 SEATTLE, WA 98109

ISSUE LOG	NO.	DATE	BY	DESCRIPTION
1	8/21/14	J.S.	J.S.	REV. REVISIONS
2	9/21/14	J.S.	J.S.	REV. REVISIONS
3	10/16/14	J.S.	J.S.	REV. UPDATES AODS
4	07/22/16	J.S.	J.S.	REV. UPDATES AODS
	11/21/2017	J.S.	J.S.	RECORD DRAWING

DRAWN BY: J.SERRANO  
 CHECKED BY: C.MCCAMMON  
 ISSUE DATE: 12/24/14  
 JOB #: 458-985980502  
 PROJECT #: SIMPLEXGRINNELL © 2017  
 SYSTEM: FIRE ALARM SYSTEM  
 SHEET: FIRST FLOOR  
 FA-102

IMPORTANT NOTICE TO USERS: By accepting or using this drawing you agree to the disclaimer contained herein. The disclaimer may not be used or transferred in any other project or address to the project for which it was prepared or used for completion of this project by any third party. SimplexGrinnell disclaims all liability for the use or reuse of altered files by the user or reuse of altered files by the user or reuse of altered files by the user. This information may not be used or transferred in any other project or address to the project for which it was prepared or used for completion of this project by any third party. SimplexGrinnell disclaims all liability for the use or reuse of altered files by the user or reuse of altered files by the user or reuse of altered files by the user.

GENERAL NOTES:  
 1. GRAY EXIST DEVICES & CONDUIT ARE EXISTING TO REMAIN.  
 2. NEW DEVICES WILL BE TIE TO INLET #4 (M4) ON TRANSPODER 2  
 3. ALL EXISTING AND NEW NAC EXPANDER PANELS WILL BE TRIP VIA INLET #4.



LAST PRINTED: 11/21/2017 2:42:08 PM  
 LAST SAVED BY: JASERRANO  
 FILE PATH: C:\Users\jaserano\Documents\Projects\Seattle\Seattle\Armory\redlineRev\_4\CAD\Floor\_103.dwg

**tyco**  
 SimplexGrinnell  
 Safer. Smarter. Tyco.<sup>SM</sup>  
 DISTRICT 48  
 9200 WADE AVE SOUTH, SUITE 100  
 SEATTLE, WA 98148  
 SERVICE: 206.261.1400  
 FAX: 206.261.1500

**SEATTLE CENTER  
 ARMORY**  
 CENTER HOUSE  
 305 HARRISON ST  
 SEATTLE, WA 98109

ISSUE NO.	DATE	BY	DESCRIPTION
1	8/21/14	JS	REV: FIELD SURVEY
2	9/21/14	JS	REV: UPDATED CIRCUITS
3	10/16/14	JS	REV: UPDATES AODS
4	07/22/16	JS	REV: UPDATES AODS
	11/21/2017	JS	REV: RECORD DRAWING

DRAWN BY: J. SERRANO  
 CHECKED BY: C. MCCAMMON  
 ISSUE DATE: 12/24/14  
 JOB #: 458-985980502  
 PROJECT #: SIMPLEXGRINNELL © 2017  
 SYSTEM: FIRE ALARM SYSTEM  
 SHEET: SECOND FLOOR  
 FA-103

IMPORTANT NOTICE TO USER: By accepting or using this drawing you agree to the disclaimer contained herein. The disclaimer is subject to the following terms and conditions: The disclaimer is subject to the disclaimer or otherwise alteration. Any use, reuse, copying, modification or alteration of the information contained herein shall be the sole risk of the user. This information may not be used or transferred in any form or by any means, electronic or mechanical, including photocopying, recording, or by any information storage and retrieval system, without the prior written permission of Tyco International Limited. Tyco International Limited, 20000 Westborough, MA 01581, USA.





